

Pyco series

Air-Operated Double
Diaphragm Pumps



innovation > technology > future

Circulation and Feed pumps Solutions for Water and Industrial Applications

Pyco 019



Pyco 026



Benefits

- Quick priming and immediate flow of product
- Handles fluid viscosities up to 5,000 cps and solids up to 0.09 in. (2.29 mm)
- Runs dry without damage. Provides air-tight seal for moisture-sensitive fluids
- Easy-out seal provides fast slide in and out of drums (through bung adapter) without disconnecting hoses.
- Easy-out seal accommodates slightly off-sized drums up to 2-1/2 in. (63.5 mm).
- Excellent for abrasive, low-to-medium viscosity fluids and shear sensitive materials use the pump in a wide range of applications: from low to high abrasive and corrosive fluids.

Features

Easy Maintenance

Low internal volume reduces waste and makes clean-up easy. Stainless steel bolts resist corrosion and provide positive positioning for easy reassembly.

Fluid Compatibility

Housings available in aluminium, stainless steel, polypropylene, groundable acetal or Kynar.

Fluid Control Choice

A wide range of seat and ball options ensure fluid compatibility and positive seal for maximum efficiency, long life and better suction lift.

Long-Lasting Rod Design

300 Series stainless steel rod designed for long life and corrosion resistance even in wet air.

Unique, Patented Air Valves

Three-way Pilot Valve for non-sticking operation. All parts are replaceable without opening wet body parts. Aluminium parts are anodized or epoxy coated to resist corrosion usually caused by dirty air. No air-line lubrication is required.

Precision-Fitted Parts

Long-wearing end-bearings assure positive rod alignment and are easily replaced.

Rugged Exterior Construction

Construction resists corrosion, prevents leakage and ensures clean fluid changes. Anodizing on aluminium wetted parts and e-coat epoxy air section resists tough environments.

Pump wetted parts and center section available in different materials

The availability of multiple materials make it possible to use the pump in a wide range of applications: from low to high abrasive and corrosive fluids.

Pyco 057

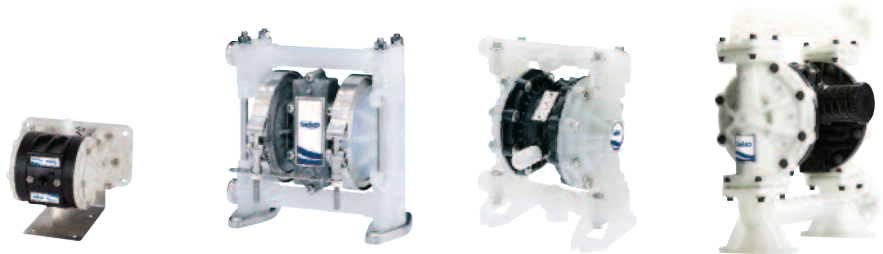


Pyco 189



- Modular air valve for stall-free, low pulsation operation, providing smooth and rapid changeover
- One-piece center section eliminates air leaks for more efficient operation
- Up to 5x longer diaphragm life for less maintenance and downtime
- Four bolt joint design provides even sealing pressure for optimal performance
- Increased number of ports for installation flexibility materials

Technical Specifications



Plastic Pumps Range	Pyco 019	Pyco 026	Pyco 057	Pyco 189
Maximum fluid working pressure	7 bar (0.7 MPa-100 psi)	7 bar (0.7 MPa-100 psi)	7 bar (0.7 MPa-100 psi)	8.6 bar (0.86 MPa - 125 psi)
Maximum pump speed	250 cpm	330 cpm	400 cpm	280 cpm
Displacement per cycle**	0.076 liter (0.02 gallon)	0.076 liter (0.02 gallon)	0.15 liter (0.04 gallon)	0.64 liters (0.17 gal)
Maximum suction lift	3 m (10 ft) dry	3.7 m (12 ft) dry	4.5 m (15 ft) dry	4.9 m (16 ft) dry, 8.8 m (29 ft) wet
Maximum size pumpable solids	1.5 mm (0.06 in)	1.5 mm (0.06 in)	2.5 mm (0.09 in)	3.2 mm (1/8 in)
Maximum operating temperature***	82°C (180°F)	65.5°C (150°F)	66°C (150°F)	66°C (150°F)
Typical sound level	70 dBa at 4.9 bar (0.49 MPa - 70 psi) air @ 125 cpm	75 dBa at 3.5 bar (0.35 MPa - 50 psi) air @ 50 cpm	74 dBa at 4.9 bar (0.49 MPa - 70 psi) air @ 125 cpm	78 dBa at 4.8 bar (0.48 MPa - 70 psi) and 50 cpm 90 dBa at 7.0 bar (0.7 MPa - 100 psi) and full flow
Maximum air consumption	0.252 m ³ /min (9.0 scfm)	0.17 m ³ /min (6 scfm)	0.672 m ³ /min (28 scfm)	67 scfm
Wetted parts (in addition to ball, seat and diaphragm materials – which may vary by pump)	Glass-filled Polypropylene, Santoprene, PTFE, Polypropylene	Polypropylene, PTFE	Polypropylene, PTFE, SST	Polypropylene and material(s) chosen for seat, ball, and diaphragm options

*Flow rates are with muffler and do not vary based on diaphragm material

**Displacement per cycle may vary based on suction condition, discharge head, air pressure and fluid type

***Actual pump performance may be affected by prolonged usage at temperature

A Worldwide Group at your service

seko is an International Group, developing, manufacturing and delivering its products in more than 50 countries, through its subsidiaries and an extended network of distributors, agents and authorized dealers.

seko is a leading manufacturer of dosing pumps and dosing systems with more than 40 years experience. This long activity allowed **seko** to acquire a vast experience in diversified applications and to confirm its international success in many industrial fields through the supply of reliable solutions for the dosing, injection and transfer of liquids.



ERTEK
www.ertek.com

**Ertek Yapı ve Makina Endüstri Ekipmanları
San. ve Tic. Ltd. Şti.**

Halkapınar Mah. Pamuk Plaza İş Merkezi 1082
Sokak No: 3 M 35170 Yenışehir Konak / İZMİR
Tel: (0232) 469 43 53 Faks: (0232) 457 46 51
www.ertek.com • info@ertek.com

For more information



www.ertek.com