

invikta series

solenoid dosing pumps



Features **Invikta**

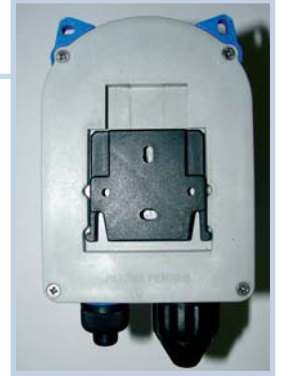
Invikta is a simple yet reliable series of micro-processor based solenoid dosing pumps.

Ideal applications are: OEMs, Swimming Pools, Car Wash, Cooling Towers, RO Systems and many other applications.

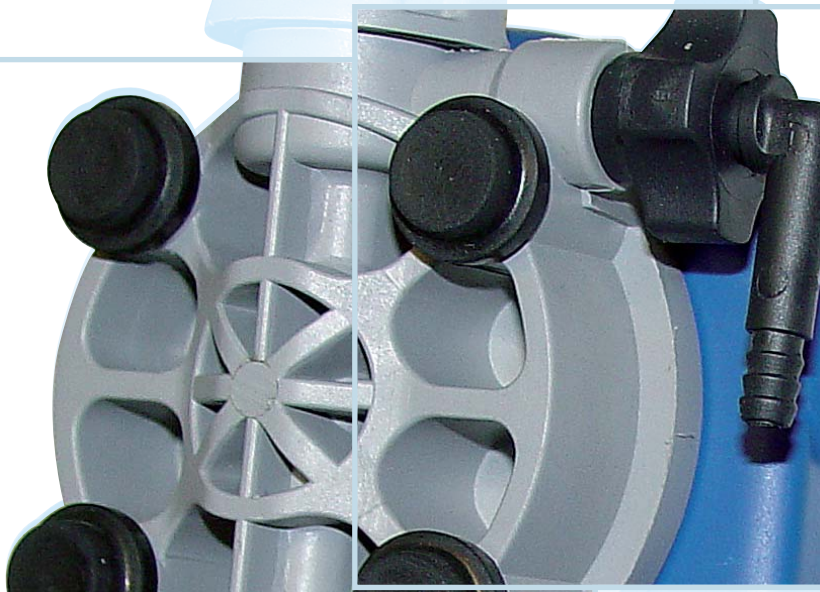
> **External plastic enclosure in PP with IP65 protection degree** protected against jets of water and aggressive environments

Wall mounting:

- Directly on wall
- With fixing bracket



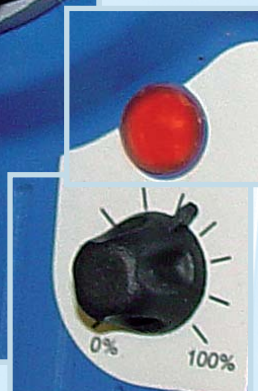
Pump head with manual priming valve



Operation state LED:

- Flashing when operating
- Slow flashing when pump stops
- Fast flashing when low level alarm is activated

Flow rate manual adjustment from 0 (operation stop) to 100% of max. flow rate



Standard 90-265 VAC power supply
(20-60 VAC upon request)

Pump can be equipped with low level alarm connection upon request

Pump coding

Model	Type	Power supply	Type of head	Installation kit	Optional
KCL	633	N	VF	W	00

Technical features

Type	Pressure (bar)	Flow rate (l/h)	Connections (IN/OUT)	Strokes/min
632	7	2	4/6	100
633	5	5	4/6	160

Wetted materials

Head Type	Pump head	Ball valves	Seals and valves	Diaphragm
VF	PVC	Ceramic	FPM	PTFE
VE	PVC	Ceramic	EPDM	PTFE

Included Installation kit



Fixing bracket



Injection connector



Suction tubing

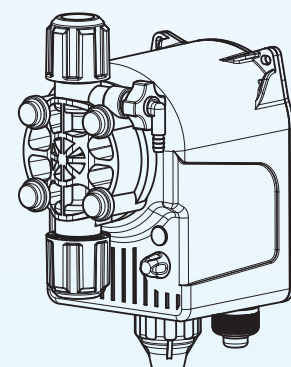
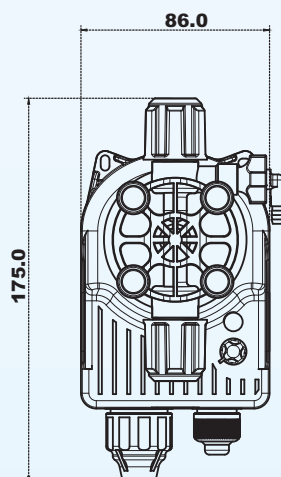
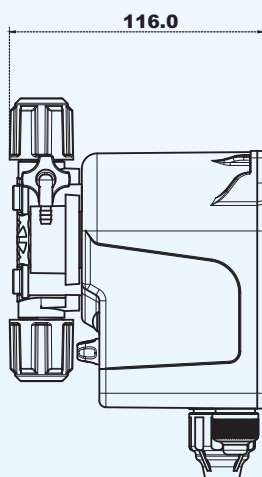


Delivery tubing



Foot filter

Dimensional Drawings



A Worldwide Group at your service



seko

ERTEK
www.ertek.com

Ertek Yapı ve Makina Endüstri Ekipmanları San. ve Tic. Ltd. Şti.

Halkapınar Mah. Pamuk Plaza İş Merkezi 1082 Sokak No: 3 M 35170 Yenışehir Konak / İZMİR
Tel: (0232) 469 43 53 Faks: (0232) 457 46 51 • www.ertek.com • info@ertek.com