

- Transmission shaft: pin joint
- Seals: Packing seal
- Motor coupling: CLOSE COUPLED
 - Flange diam. 160 / 200 / 250 / 300 mm related to the pumps sizes
 - Female drive shaft SS 316 / carbon steel with chrome (HCP)
 - Diam. 19 / 24 / 25 / 28 / 30 / 32 / 35 / 40 mm related to the pumps sizes

Technical characteristics

- Flow rates: up to 60 m³/h
- Max Pressure: up to 8 bar (116 psi)
- Max working temp: 180° C
- Shaft Rotation: ACW
- Motor:
 - 1.5 kW – 2 poles
 - 2.2 kW – 2 poles
 - 3 kW – 2 poles
 - 4 kW – 2 and 4 poles
 - 7.5 kW – 4 poles
 - 11 kW – 4 poles
- Body pump:
 - G25
 - SS 304
 - SS 316
- Stator material: NBR
- Rotor material:
 - SS 304
 - SS 420 B
 - SS 316

Seko Progressive Cavity FH Series are designed for heavy duty service, thanks to their own hopper, these pumps are suitable for transfer products with high viscosity and elevated percentage of solids. Model H is equipped with mono block support to connect the body pump to the electric motor.

The hopper is required on these products:

- Dehydrated sludges up to 17% dry solids
- Mortar
- Cellulose paste
- Fish shies
- Soft ice
- and many others

Our pump find several applications for:

- Conveying : raw, primary, secondary sludge
- Thickened sludges
- Sludges in in filter press

Available on request: pumps with performances up to 48 bar and 9000 l/h and several body pump material configuration to get the best solution for each process.



PUMP KEY CODE

1°	Model		
F	Flanged		
2°	Configuration		
N	Monoblock		
S	Joint		
H	Monoblock with Hopper		
T	Joint with Hopper		
3°/4°	Outlet Pressure [bar]		
02	2		
03	3		
04	4		
08	8		
5°/6°/7°	Max Capacity [m³/h]		
2V5	2.5		
005	5		
010	10		
020	20		
026	26		
040	40		
060	60		
8°/9°	Regulation		
V0*	Hand Variator		
10°	Power Supply [kW]		
E	1,5		
F	1,9		
G	2,2		
H	3		
I	4		
M	7,5		
O	11		
11°	Motor Poles		
2	2		
4	4		
12°	Construction pump		
C	Cast Iron G25		
S	SS 304		
K	SS 316		
13°/14°/15°	Optional		
000**	Standard		
...		

F	H	08	2V5	V0*	F	2	S	000**
----------	----------	-----------	------------	------------	----------	----------	----------	--------------

(*) Models with fix flow rate (**Gear Reducer**) available on request

(**) To identify a Baseplate, if request, you have to fill in the position n°13 of the code, as follows:

- For **Cast-Iron** pump, add letter "**C**" for Base-Plate in Iron material
- For **AISI 304** pump, add letter "**S**" for Base-Plate in AISI 304 material

HYDRAULIC CHARACTERISTICS

Pump Model	Cast Iron	SS 304	SS 316	Flow Rate +MTV* at Max Pressure m ³ /h	RPM/1'	Max Backpressure		FH Series
						bar	psi	Electric Motor [kW / Poles]
F H 0 2 2 V 8 V 0 E 2 C / S 000				0,6 - 2,8	100 - 500	2	29	1,5 / 2
F H 0 2 0 0 5 V 0 E 2 C / S / K 000				1 - 5	80 - 400	2	29	1,5 / 2
F H 0 4 0 0 5 V 0 G 2 C / S / K 000				1 - 5	80 - 400	4	58	2,2 / 2
F H 0 8 2 V 5 V 0 G 2 C / S / K 000				0,5 - 2,5	80 - 400	8	116	2,2 / 2
F H 0 8 0 0 5 V 0 H 2 C / S / K 000				1 - 5	80 - 400	8	116	3 / 2
F H 0 2 0 1 0 V 0 G 2 C / S / K 000				2 - 10	80 - 400	2	29	2,2 / 2
F H 0 4 0 1 0 V 0 H 2 C / S / K 000				2 - 10	80 - 400	4	58	3 / 2
F H 0 8 0 1 0 V 0 I 2 C / S / K 000				2 - 10	80 - 400	8	116	4 / 2
F H 0 3 0 2 0 V 0 I 4 C / S / K 000				4 - 20	80 - 400	3	43,5	4 / 4
F H 0 2 0 2 6 V 0 I 4 C / S / K 000				5 - 26	80 - 400	2	29	4 / 4
F H 0 4 0 4 0 V 0 M 4 C / S / K 000				8 - 40	80 - 400	4	58	7,5 / 4
F H 0 2 0 6 0 V 0 O 4 C / S / K 000				12 - 60	50 - 250	2	29	11 / 4

Monoblock with HOPPER

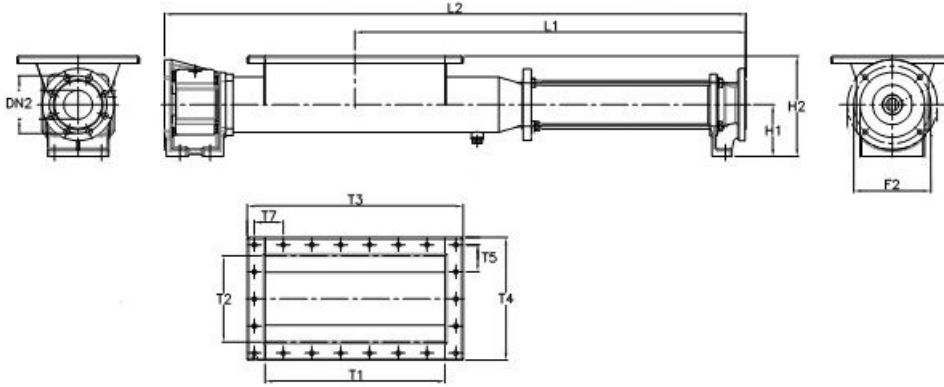
(*) +MTR

Models with fix flow rate (Gear Reducer)
available on request

PUMP HEAD MATERIAL

Material	C	S	K
Rotor	SS 420B	SS 304	SS 316
Stator	NBR-Perburan	NBR-Perburan	NBR-Perburan
Seals	Mech. Seal Sic/Sic/EPDM or Packing seal	Mech. Seal Sic/Sic/EPDM or Packing seal	Mech. Seal Sic/Sic/EPDM or Packing seal

DIMENSIONS



MODEL	L1	L2	DN2	T1	T2	T3	T4	T5	T7	F2	H1	H2	Kg
FS022V8	448	743	40	-	-	250	-	-	-	-	102	212	21.5
FS082V5 FH02005 FH04005	704	1066	50	310	180	390	260	75	70	125	102	212	41
FH02010 FH04010 FH08005	837	1252	65	350	220	430	300	65	65	165	102	222	59
FH03020 FH08010	1087	1617	80	500	240	600	340	75	80	215	143	278	108
FH02026	1167	1697	80	500	240	600	340	75	80	215	143	278	110
FH04040	1284	1824	100	500	280	600	380	82,5	80	215	155	315	167
FH02060	1554	2181	125	600	330	700	430	76	80	265	170	350	294

ACCESSORIES (on request)

