

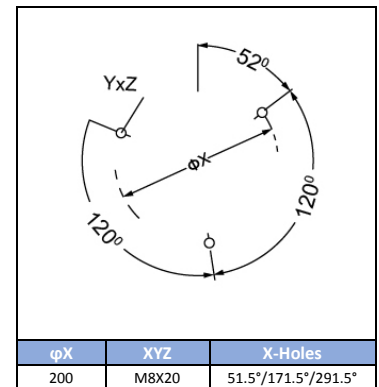
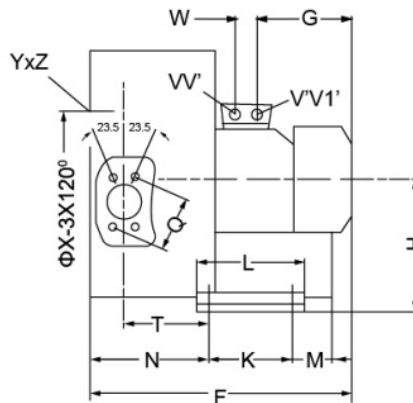
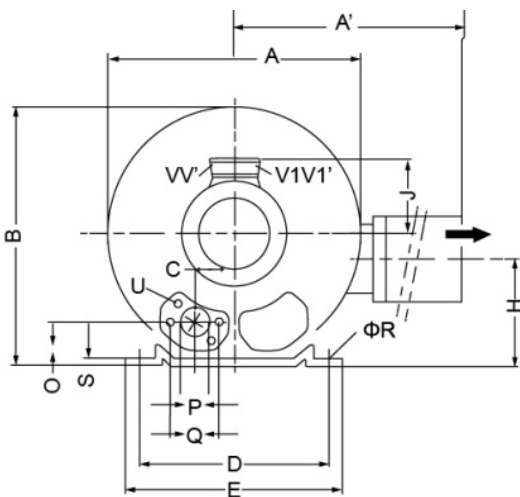
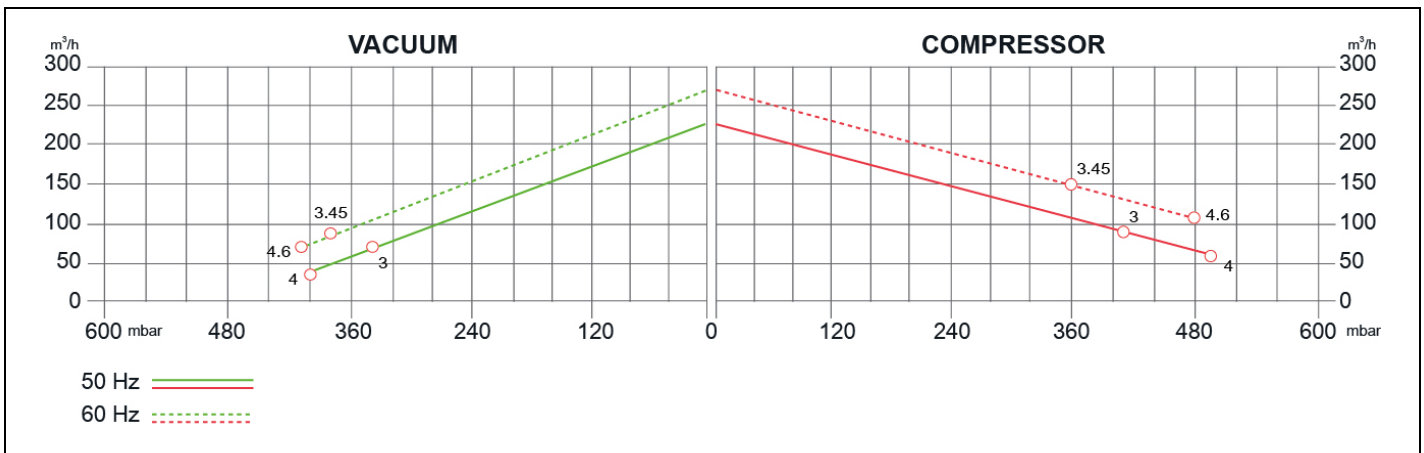
# SIDE CHANNEL BLOWERS

## BL 520 002 – Double Impeller – Three Phase



Construction of the ring blowers fans is based on the lateral ducts principle. The blowers can operate as either exhaust or compression fans and are designed for continuous service. The device is assembled directly on the motor shaft; all the rotating parts are dynamically balanced to ensure absolute absence of vibration. Full die-cast aluminum construction for maximum sturdiness and ease of handling. The characteristics data given here refer to the handling of gas with inlet temperature of 15°C, normal density of 1,23 kg/m<sup>3</sup> and absolute pressure of 1023 mbar. Tolerance of ±10%.

Model	Freq. [Hz]	Power [kW]	Voltage [V]		Rated Current [A]		Max Airflow [m <sup>3</sup> /h]	Rated VACUUM [mbar]	Rated COMPRESSOR [mbar]	Noise [dB A]	Weight [kg]
			△	Y	△	Y					
BL52000203000	50	3.00	200÷240	345÷415	12.5	7.2	230	-340	410	72	39
	60	3.45	220÷275	380÷480	12.6	7.3	275	-380	360	74	
BL52000204000	50	4.00	345÷415	600÷720	10	5.8	230	-390	490	72	44
	60	4.60	380÷480	660÷720	9.9	5.71	275	-410	480	74	



MODEL	A	A'	B	C	D	E	F	G	H	H'	J	K	L	M	N	O	φP	Q	φR	S	T	U	V	V'	V1	V1'	W	
BL52000203000	372	411	371	60	260	295	465	190	175	144	135	115	155	98	171	48	55	83	14	4	116	M8X17	M32x1.5	M32x1.5	M32x1.5	M32x1.5	M32x1.5	42°
BL52000204000	372	411	371	60	260	295	499	224	175	144	135	115	155	98	171	48	55	83	14	4	116	M8X17	M32x1.5	M32x1.5	M32x1.5	M32x1.5	M32x1.5	42°

Your Choice,  
Our Commitment

Technical data can be changed without notice.

