

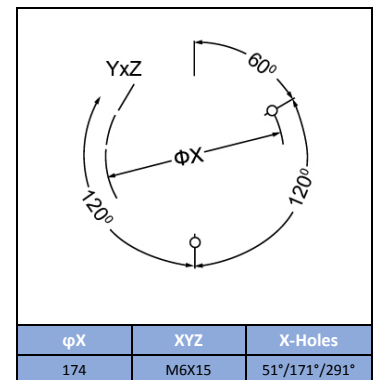
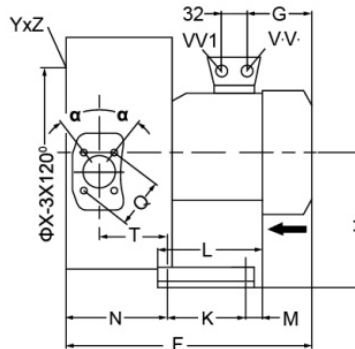
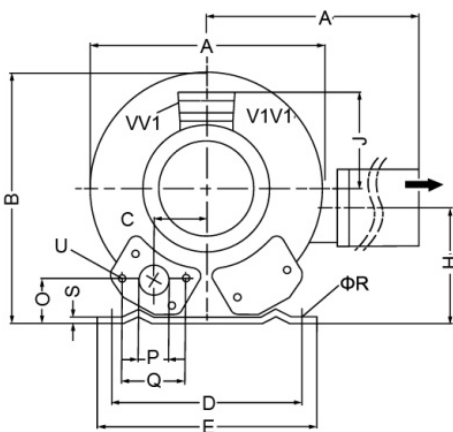
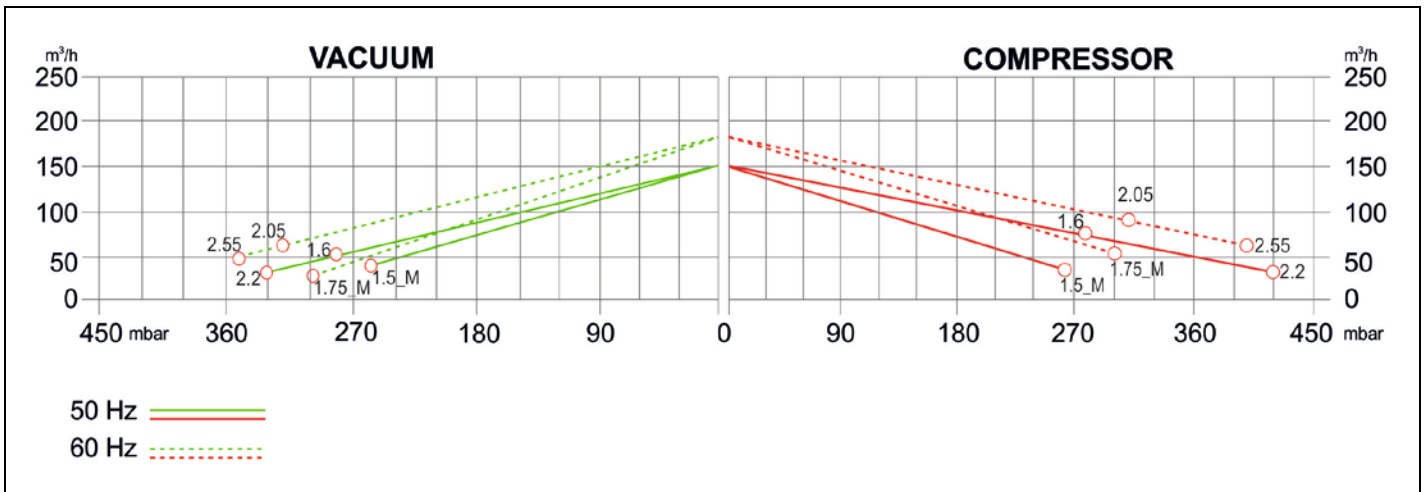
SIDE CHANNEL BLOWERS

BL 420 002 – Double Impeller – Single & Three Phase



Construction of the ring blowers fans is based on the lateral ducts principle. The blowers can operate as either exhaust or compression fans and are designed for continuous service. The device is assembled directly on the motor shaft; all the rotating parts are dynamically balanced to ensure absolute absence of vibration. Full die-cast aluminum construction for maximum sturdiness and ease of handling. The characteristics data given here refer to the handling of gas with inlet temperature of 15°C, normal density of 1,23 kg/m³ and absolute pressure of 1023 mbar. Tolerance of ±10%.

Model	Freq. [Hz]	Power [kW]	Voltage [V]		Rated Current [A]		Max Airflow [m ³ /h]	Rated VACUUM [mbar]	Rated COMPRESSOR [mbar]	Noise [dB A]	Weight [kg]
			△	Y	△	Y					
BL42000201600	50	1.60	200÷240	345÷415	7.5	4.3	150	-280	280	66	25
	60	2.05	220÷275	380÷480	7.6	4.4	180	-320	310	69	
BL42000202200	50	2.20	200÷240	345÷415	9.7	5.6	150	-330	420	66	27
	60	2.55	220÷275	380÷480	10	5.8	180	-350	440	69	



MODEL	A	A'	B	C	D	E	F	G	H	H'	J	K	L	M	N	O	P	Q	ØR	S	T	U	(1~)		(3~)		α
																							V	V'	V	V1'	
BL42000201600	322	324	315	58	225	255	401	191	154	153	128	95	130	73	151	45	G1/2"	72	12	3	104	M6x19			M25X1.5	M16X1.5	28
BL42000202200	322	324	315	58	225	255	401	191	154	153	128	95	130	73	151	45	G1/2"	72	12	3	104	M6x19			M25X1.5	M16X1.5	28
BL320002M1500	322	324	315	58	225	255	401	191	154	153	128	95	130	73	151	45	G1/2"	72	12	3	104	M6x19	M16X1.5	M25X1.5			28

Your Choice,
Our Commitment

Technical data can be changed without notice.

