

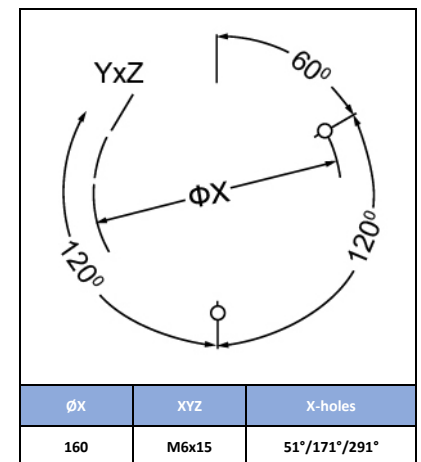
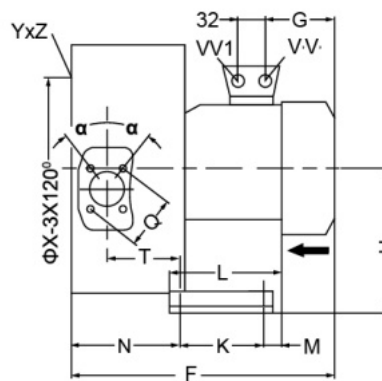
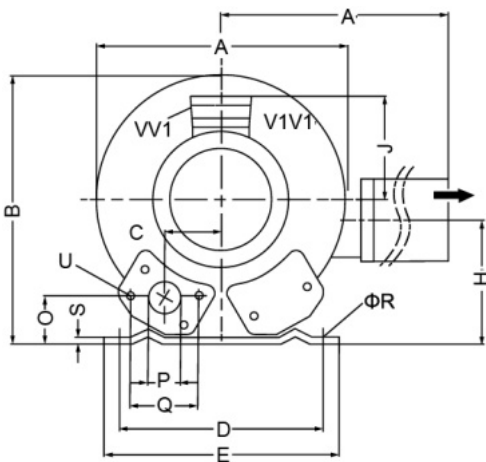
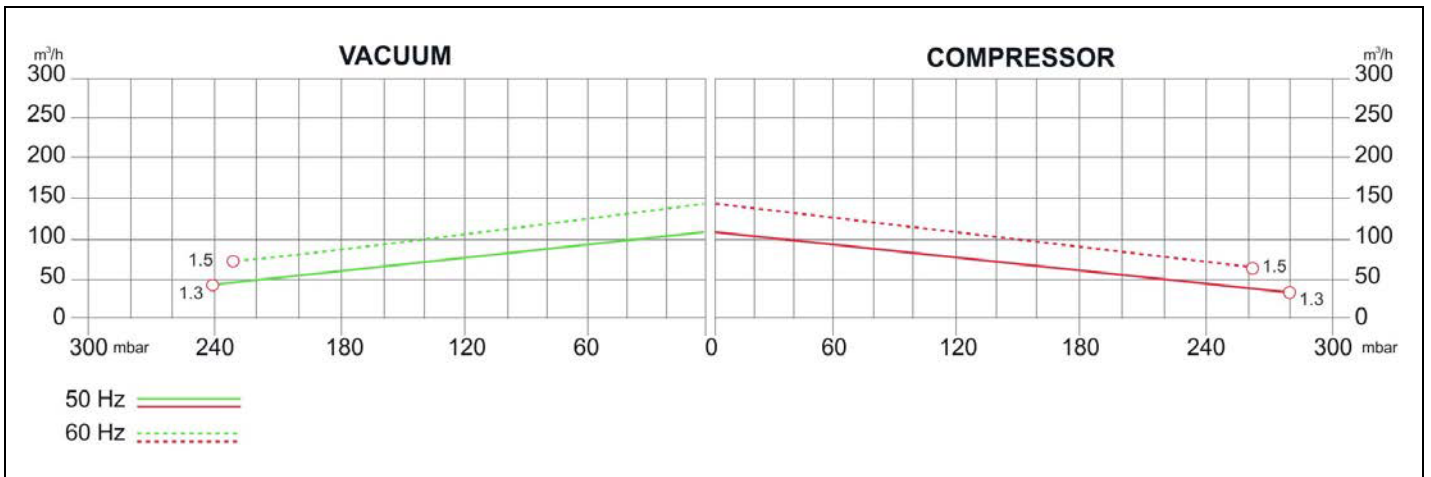
SIDE CHANNEL BLOWERS

BL 352 002 – Double Impeller – Single Phase



Construction of the ring blowers fans is based on the lateral ducts principle. The blowers can operate as either exhaust or compression fans and are designed for continuous service. The device is assembled directly on the motor shaft; all the rotating parts are dynamically balanced to ensure absolute absence of vibration. Full die-cast aluminum construction for maximum sturdiness and ease of handling. The characteristics data given here refer to the handling of gas with inlet temperature of 15°C, normal density of 1,23 kg/m³ and absolute pressure of 1023 mbar. Tolerance of ±10%.

Model	Freq. [Hz]	Power [kW]	Voltage [V]		Rated Current [A]		Max Airflow [m ³ /h]	Rated VACUUM [mbar]	Rated COMPRESSOR [mbar]	Noise [dB A]	Weight [kg]
			△	Y	△	Y					
BL352002M1300	50	1.3	220÷240		7.3		120	-240	280	58	17
	60	1.5									



MODEL	A	A'	B	C	D	E	F	G	H	H'	J	K	L	M	N	O	P	Q	φR	S	T	U	(1~)		(3~)		α		
																							V	V'	V	V1'			
BL352002M1300	293	324	286	47	205	230	354	160	141	114	120	83	108	82	138	41	G1/4"	64	10	2.5	92	M6x17	M16X1.5	M25X1.5					27

Your Choice,
Our Commitment

Technical data can be changed without notice.
TD_BL352002_rev 1.0

