

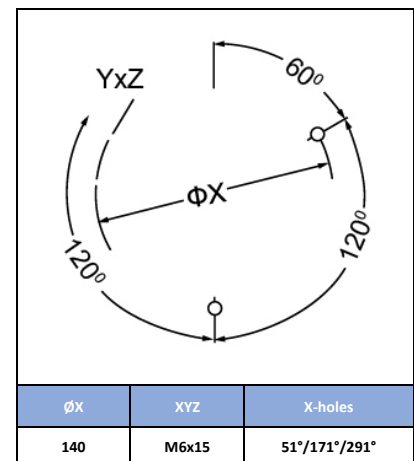
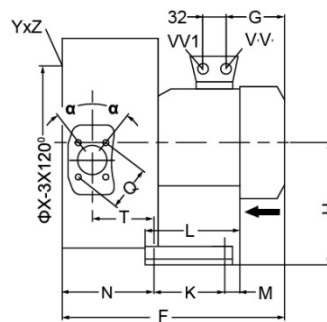
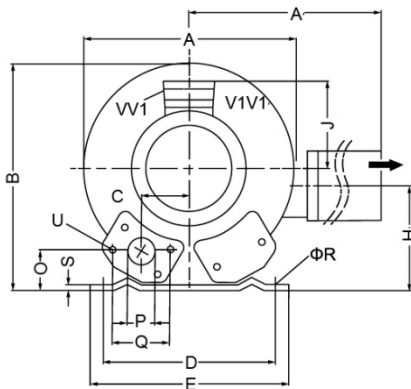
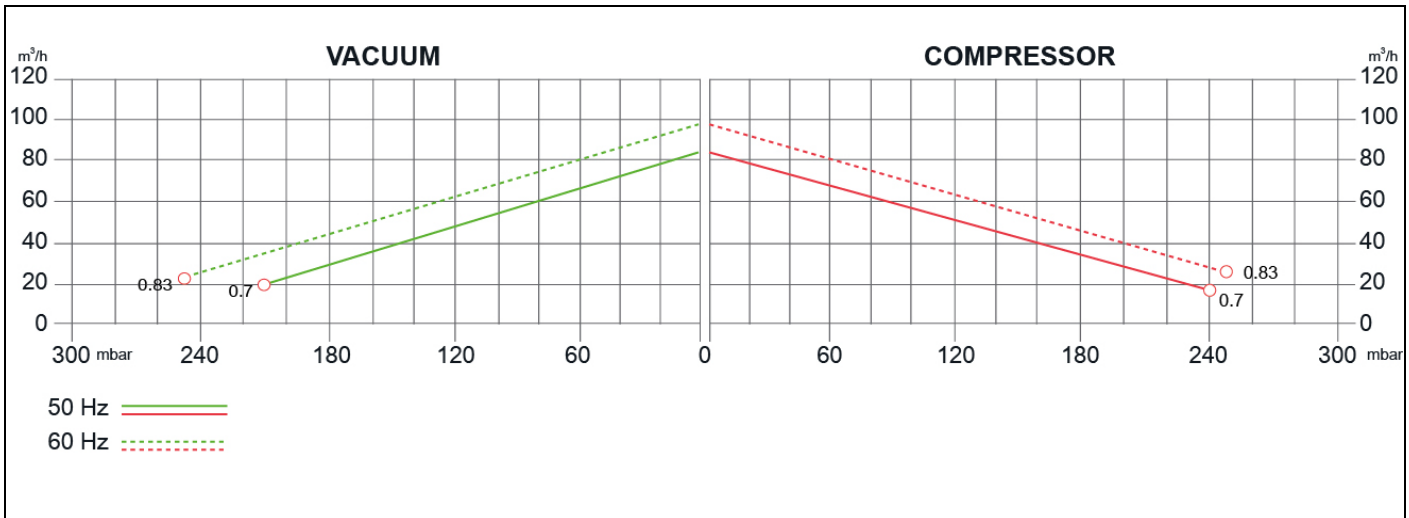
# SIDE CHANNEL BLOWERS

## BL 320 002 – Double Impeller – Single & Three Phase



Construction of the ring blowers fans is based on the lateral ducts principle. The blowers can operate as either exhaust or compression fans and are designed for continuous service. The device is assembled directly on the motor shaft; all the rotating parts are dynamically balanced to ensure absolute absence of vibration. Full die-cast aluminum construction for maximum sturdiness and ease of handling. The characteristics data given here refer to the handling of gas with inlet temperature of 15°C, normal density of 1,23 kg/m<sup>3</sup> and absolute pressure of 1023 mbar. Tolerance of ±10%.

Model	Freq. [Hz]	Power [kW]	Voltage [V]		Rated Current [A]		Max Airflow [m <sup>3</sup> /h]	Rated VACUUM [mbar]	Rated COMPRESSOR [mbar]	Noise [dB A]	Weight [kg]
			△	Y	△	Y					
BL32000200700	50	0.70	220÷240	354÷315	3.8	2.2	88	-210	240	55	15
	60	0.83	220÷275	380÷480	3.75	2.15	102	-250	250	61	
BL320002M0700	50	0.7	220÷240		4.5		88	-210	240	55	16
	60	0.83			5.6		103	-250	250	61	



MODEL	A	A'	B	C	D	E	F	G	H	H'	J	K	L	M	N	O	P	Q	φR	S	T	U	(1~)		(3~)		α
																							V	V'	V	V1'	
BL32000200700	284	316	270	45	205	230	316	135	128	106	111	83	108	75	130	39	G1/4"	64	10	2.8	88	M6x7			M25X1.5	M16X1.5	27
BL320002M0700	246	247	270	45	205	230	316	135	128	106	111	83	108	75	130	39	G1/4"	64	10	2.8	88	M6x7	M16X1.5	M25X1.5			27

Your Choice,  
Our Commitment

Technical data can be changed without notice.

