

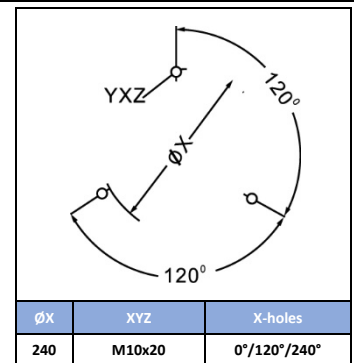
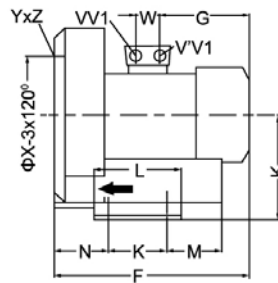
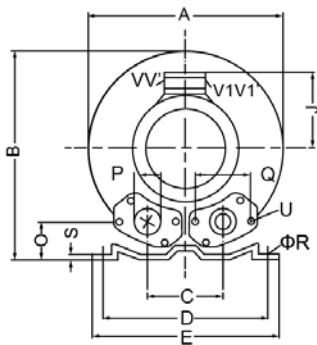
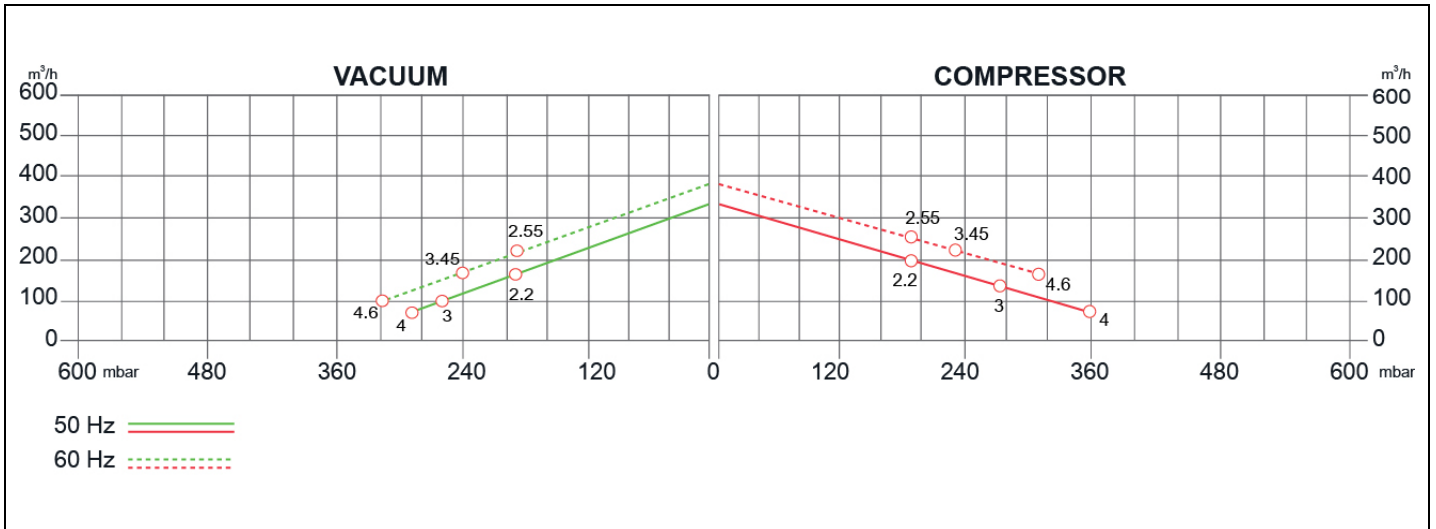
SIDE CHANNEL BLOWERS

BL 060 001 – Single Impeller - Single & Three Phase



Construction of the ring blowers fans is based on the lateral ducts principle. The blowers can operate as either exhaust or compression fans and are designed for continuous service. The device is assembled directly on the motor shaft; all the rotating parts are dynamically balanced to ensure absolute absence of vibration. Full die-cast aluminum construction for maximum sturdiness and ease of handling. The characteristics data given here refer to the handling of gas with inlet temperature of 15°C, normal density of 1,23 kg/m³ and absolute pressure of 1023 mbar. Tolerance of ±10%.

Model	Freq. [Hz]	Power [kW]	Voltage [V]		Rated Current [A]		Max Airflow [m ³ /h]	Rated VACUUM [mbar]	Rated COMPRESSOR [mbar]	Noise [dB A]	Weight [kg]
			Δ	Y	Δ	Y					
BL06000102200	50	2.2	200÷240	345÷415	9.7	5.6	318	-180	190	69	31
	60	2.55	220÷275	380÷480	10.3	6.5	376	-190	190	72	
BL06000103000	50	3	200÷240	345÷415	12.5	7.3	318	-270	270	69	36
	60	3.45	220÷275	380÷480	12.5	7.3	376	-250	230	72	
BL06000104000	50	4	345÷415	600÷720	9.0	5.2	318	-290	360	69	40
	60	4.6	345÷415	660÷720	9.4		376	-320	310	72	
BL060001M2200	50	2.2	220÷240		12.8		318	-190	190	72	30
	60	2.55					376		200	74	



MODEL	A	B	C	D	E	F	G	H	J	K	L	M	N	O	ØP	Q	ØR	S	U	(1~)		(3~)		W
																				V	V'	V	V1'	
BL06000102200	382	384	125	290	325	377	191	197	128	140	180	84	109	54	55	83	15	4.5	M8x17					29
BL06000103000	382	384	125	290	325	409	188	197	135	140	180	84	109	54	55	83	15	4.5	M8x17	M32x1.5	M32x1.5	M32x1.5	M32x1.5	42
BL06000104000	382	384	125	290	325	432	209	197	148	140	180	84	109	54	55	83	15	4.5	M8x17	M32x1.5	M32x1.5	M32x1.5	M32x1.5	42
BL060001M2200	382	384	125	290	325	377	191	197	128	140	180	84	109	54	55	83	15	4.5	M8x17					29

Your Choice,
Our Commitment



Ertek Yapı ve Makina Endüstri Ekipmanları San. ve Tic. Ltd. Şti.
Halkapınar Mah. Pamuk Plaza İş Merkezi 1082 Sokak No: 3 M 35170 Yenişehir Konak / İZMİR
Tel: (0232) 469 43 53 Faks: (0232) 457 46 51 • www.ertek.com • info@ertek.com

