

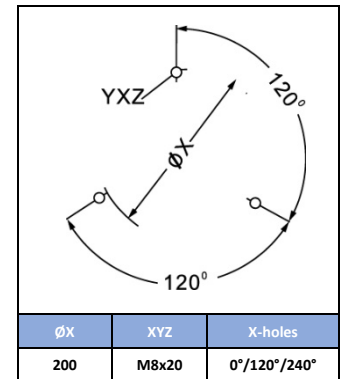
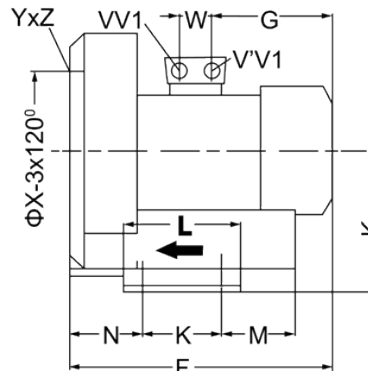
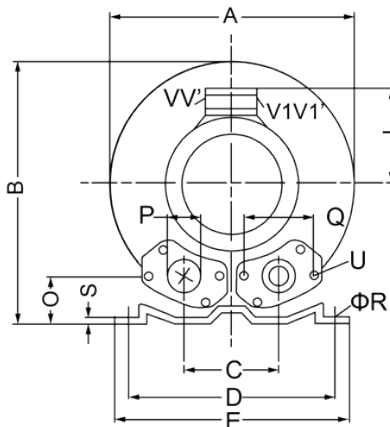
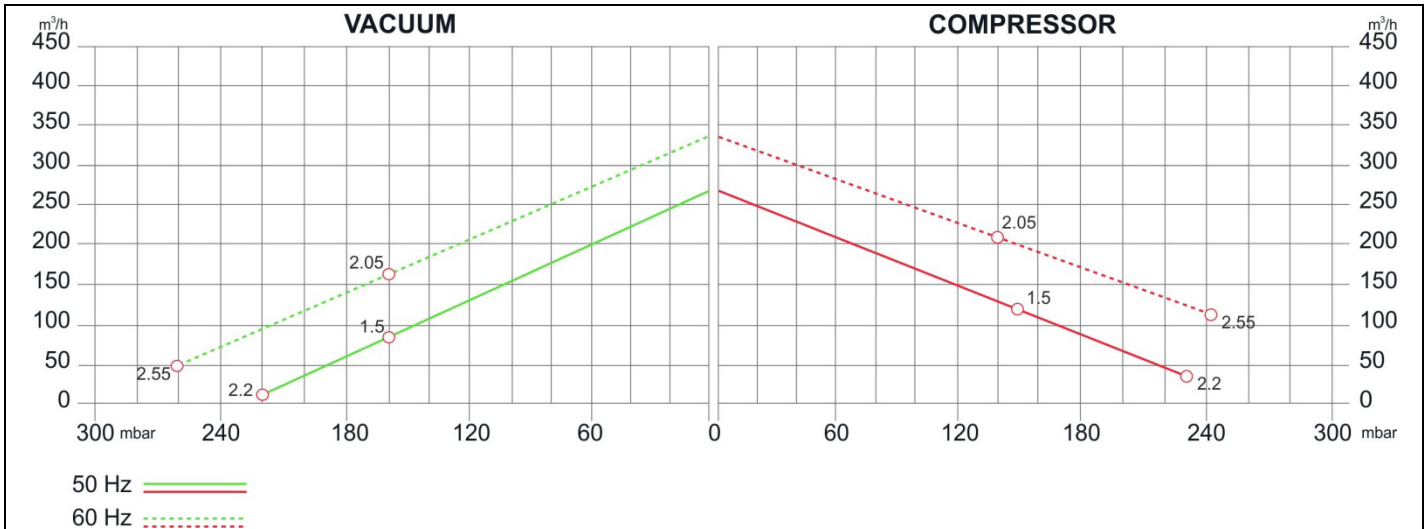
# SIDE CHANNEL BLOWERS

## BL 053 001 – Single Impeller - Single & Three Phase



Construction of the ring blowers fans is based on the lateral ducts principle. The blowers can operate as either exhaust or compression fans and are designed for continuous service. The device is assembled directly on the motor shaft; all the rotating parts are dynamically balanced to ensure absolute absence of vibration. Full die-cast aluminum construction for maximum sturdiness and ease of handling. The characteristics data given here refer to the handling of gas with inlet temperature of 15°C, normal density of 1,23 kg/m<sup>3</sup> and absolute pressure of 1023 mbar. Tolerance of ±10%.

Model	Freq. [Hz]	Power [kW]	Voltage [V]		Rated Current [A]		Max Airflow [m <sup>3</sup> /h]	Rated VACUUM [mbar]	Rated COMPRESSOR [mbar]	Noise [dB A]	Weight [kg]
			△	Y	△	Y					
BL05300001500	50	1.5	345÷415	600÷720	7.5	4.3	270	-160	150	65	24
	60	2.05	380÷480	660÷720	7.6	4.4	330			71	
BL05300002200	50	2.2	345÷415	600÷720	9.7	5.6	270	-220	230	65	26
	60	2.55	380÷480	660÷720	10.3	6.0	330	-260	250	71	
BL053000M1500	50	1.5	220÷240		10.4		270	-150	140	65	26
	60	1.75			11.2		330			-120	



MODEL	A	B	C	D	E	F	G	H	J	K	L	M	N	O	φP	Q	φR	S	U	(1~)		(3~)		W
																				V	V'	V	V1'	
BL05300101500	334	337	120	260	295	365	191	175	128	115	155	96	87	48	55	83	14	4	M8x17			M25x1.5	M16x1.5	29
BL05300102200	334	337	120	260	295	365	191	175	128	115	155	96	87	48	55	83	14	4	M8x17			M25x1.5	M16x1.5	29
BL053001M1500	334	337	120	260	295	365	191	175	128	115	155	96	87	48	55	83	14	4	M8x17	M25x1.5	M16x1.5			29

Your Choice,  
Our Commitment



Ertek Yapı ve Makina Endüstri Ekipmanları San. ve Tic. Ltd. Şti.  
Halkapınar Mah. Pamuk Plaza İş Merkezi 1082 Sokak No: 3 M 35170 Yenışehir Konak / İZMİR  
Tel: (0232) 469 43 53 Faks: (0232) 457 46 51 • www.ertek.com • info@ertek.com

