

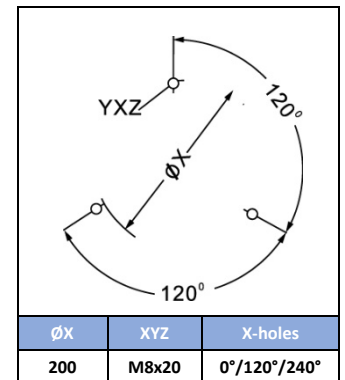
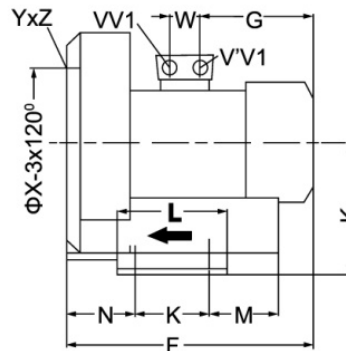
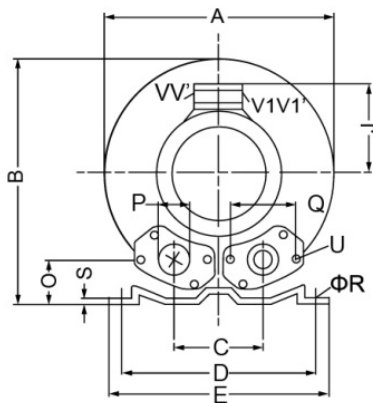
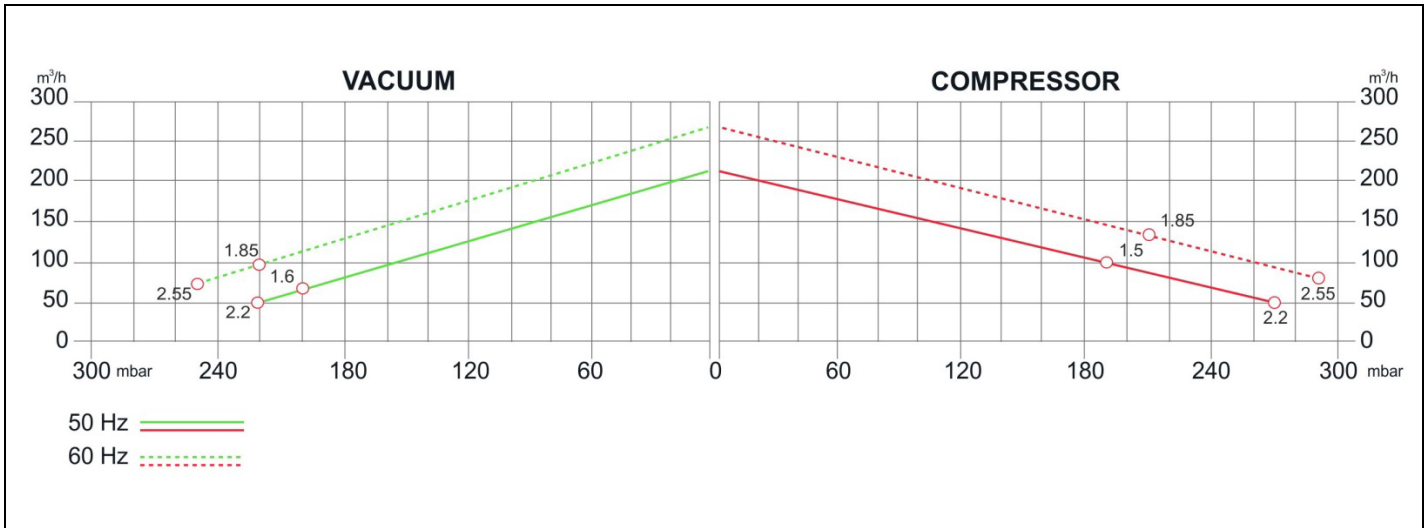
SIDE CHANNEL BLOWERS

BL 050 001 – Single Impeller - Single & Three Phase



Construction of the ring blowers fans is based on the lateral ducts principle. The blowers can operate as either exhaust or compression fans and are designed for continuous service. The device is assembled directly on the motor shaft; all the rotating parts are dynamically balanced to ensure absolute absence of vibration. Full die-cast aluminum construction for maximum sturdiness and ease of handling. The characteristics data given here refer to the handling of gas with inlet temperature of 15°C, normal density of 1,23 kg/m³ and absolute pressure of 1023 mbar. Tolerance of ±10%.

Model	Freq. [Hz]	Power [kW]	Voltage [V]		Rated Current [A]		Max Airflow [m ³ /h]	Rated VACUUM [mbar]	Rated COMPRESSOR [mbar]	Noise [dB A]	Weight [kg]
			△	Y	△	Y					
BL05000101500	50	1.5	200÷240	345÷415	7.5	4.3	210	-200	190	64	23
	60	1.85	220÷275	380÷480	7.6	4.4	255	-220	210	70	
BL05000102200	50	2.2	200÷240	345÷415	9.7	5.6	210	-220	270	64	27
	60	2.55	220÷275	380÷480	10.3	6.0	255	-260	290	70	
BL050001M1500	50	1.5	220÷240		9		210	-200	190	64	24
	60	1.75	220÷240		9.5		255	-220	210	70	



MODEL	A	B	C	D	E	F	G	H	J	K	L	M	N	O	ØP	Q	ØR	S	U	(1~)		(3~)		W
																				V	V'	V	V1'	
BL05000101500	334	337	120	260	295	346	191	175	128	115	155	96	87	48	55	83	14	4	M8x17			M25x1.5	M16x1.5	29
BL05000102200	286	337	120	260	295	346	191	175	128	115	155	96	87	48	55	83	14	4	M8x17			M25x1.5	M16x1.5	29
BL050001M1500	334	337	120	260	295	345	191	175	128	115	155	96	87	48	55	83	14	4	M8x17	M25x1.5	M16x1.5			29

Your Choice,
Our Commitment

