

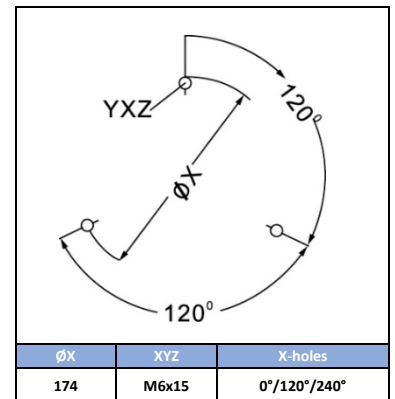
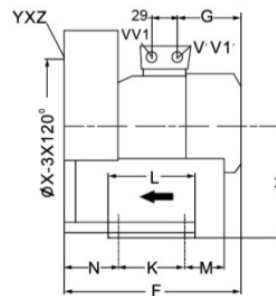
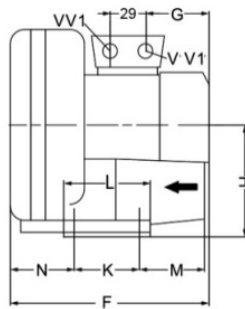
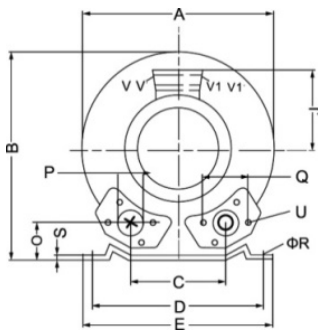
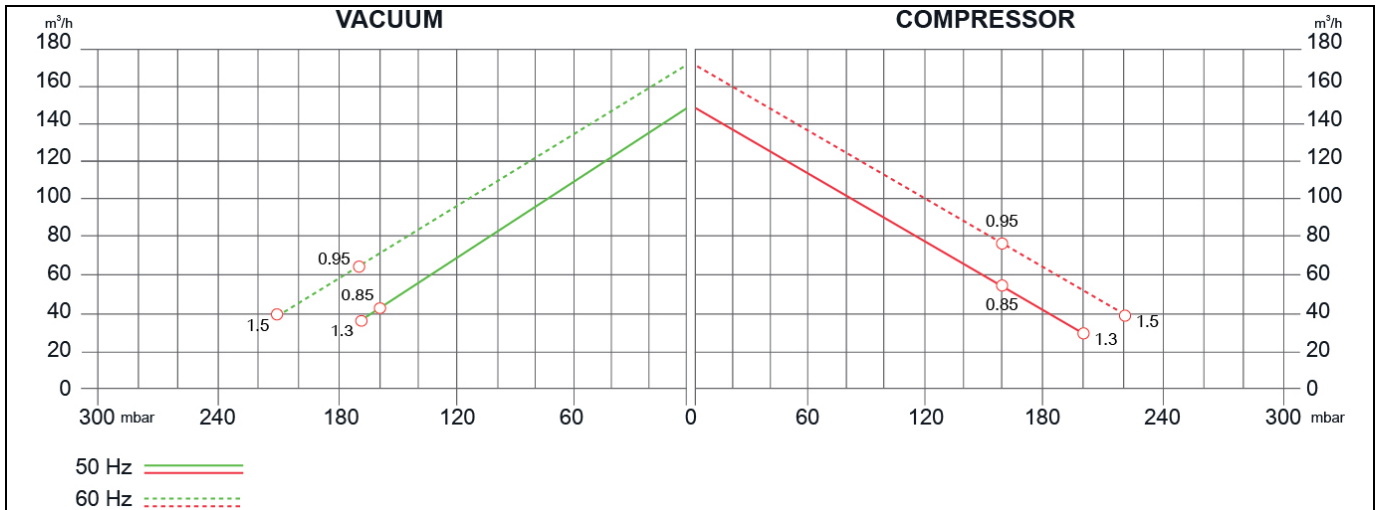
SIDE CHANNEL BLOWERS

BL 040 001 – Single Impeller - Single & Three Phase



Construction of the ring blowers fans is based on the lateral ducts principle. The blowers can operate as either exhaust or compression fans and are designed for continuous service. The device is assembled directly on the motor shaft; all the rotating parts are dynamically balanced to ensure absolute absence of vibration. Full die-cast aluminum construction for maximum sturdiness and ease of handling. The characteristics data given here refer to the handling of gas with inlet temperature of 15°C, normal density of 1,23 kg/m³ and absolute pressure of 1023 mbar. Tolerance of ±10%.

Model	Freq. [Hz]	Power [kW]	Voltage [V]		Rated Current [A]		Max Airflow [m ³ /h]	Rated VACUUM [mbar]	Rated COMPRESSOR [mbar]	Noise [dB A]	Weight [kg]
			△	Y	△	Y					
BL04000100900	50	0.85	200÷240	345÷415	3.85	2.25	145	-160	160	63	17
	60	0.95	220÷275	380÷480	4.0	2.3	175	-160	160	64	
BL04000101300	50	1.3	200÷240	345÷415	5.7	3.3	145	-170	200	63	18
	60	1.5	220÷275	380÷480	6.0	3.5	175	-210	220	64	
BL040001M0900	50	0.85	220÷240		5		145	-160	160	63	16
	60	0.95			5.8		175	-160	160	64	
BL040001M1300	50	1.3	220÷240		7.3		145	-170	200	63	17
	60	1.5			7.8		175	-210	220	64	



MODEL	A	B	C	D	E	F	G	H	J	K	L	M	N	O	P	Q	ØR	S	U	(1~)		(3~)	
																				V	V'	V1	V1'
BL04000100900	286	302	115	225	255	292	160	154	120	95	130	70	75	46	G1½	72	12	3	M6x19			M25X1.5	M16X1.5
BL04000101300	286	302	115	225	255	292	160	154	120	95	130	70	75	46	G1½	72	12	3	M6x19			M25X1.5	M16X1.5
BL040001M0900	286	302	115	225	255	294	160	154	120	95	130	70	75	46	G1½	72	12	3	M6x19	M16x1.5	M25X1.5		
BL040001M1300	286	302	115	225	255	294	160	154	120	95	130	70	75	46	G1½	72	12	3	M6x19	M16x1.5	M25X1.5		

Your Choice,
Our Commitment



Ertek Yapı ve Makina Endüstri Ekipmanları San. ve Tic. Ltd. Şti.
Halkapınar Mah. Pamuk Plaza İş Merkezi 1082 Sokak No: 3 M 35170 Yenışehir Konak / İZMİR
Tel: (0232) 469 43 53 Faks: (0232) 457 46 51 • www.ertek.com • info@ertek.com

