



# Solutions for **Pools & Spa**



Your Choice,  
Our Commitment



# Content

**Introduction** page 04

**Equipment for Residential Pools & Spa** page 06

- Control and dosing systems
- Pre-assembled panel-mounted

**Equipment for Professional Pools** page 18

- Photometer Systems and PoolPhotometer
- Kontrol Panel and Kontrol Guard Tech
- Kontrol Tekna Panel with controllers

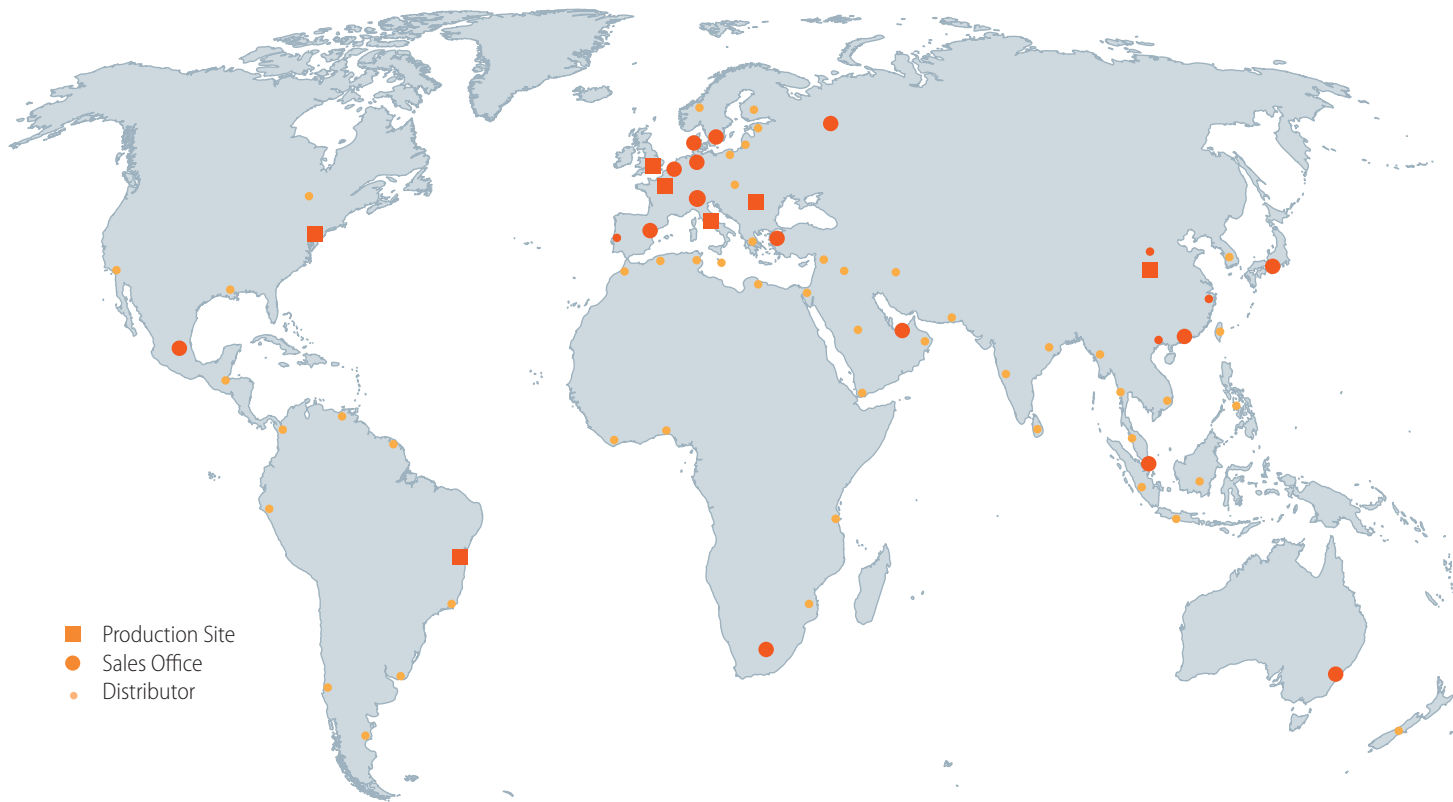
**Equipment for Pools & Wellness** page 28

- Dosing pumps
- Controllers and portable controllers
- Blower Side Channel compressors
- Pool Cleaning Station

**Accessories** page 34

- Probes
- Modular Probes Holder
- By-Pass probe holders and clamp saddles
- Cables
- Buffer solution pH/ORP
- Housing and filter cartridges 5"
- Water meter pulse sender
- Tank, Uncovered tank, Reinforced and Mixers

**Additional Information** page 42



# A Worldwide Group at your service

## Globally Present, Locally Active

Our Global presence ensures that we can support our Customers wherever they are. Supported by teams in over 20 countries, as well as by our accredited Partner Distributor network, we ensure professional, local customer support in over 120 countries, with the added benefit of rapid delivery of goods to meet your needs.

All this backed up and supported by a world-class team of Technical Customer Service, able to provide all the back up or technical support needed. With ISO certificated production sites in Europe, the Americas and Asia, we are close to our customers and fully compliant with all local norms both in terms of our product designs as much as our production facilities.

# How SEKO works for You

From the spark of an idea, through to the delivery of a solution, SEKO is with you all the way

SEKO supports its customers in every phase of a project, from the inception of an idea or request, through design and testing to launch and installation. Our in-house research, design and development teams work closely with the local teams, drawing on customer and market inputs. Then using state-of-the-art technologies to optimize costs and using our own specifically designed test benches to ensure rigorous, robust testing, we ensure a quality solution is delivered quickly to market.

No matter which processes and applications are planned SEKO has a solution in the cleaning and hygiene of kitchens and laundries and surfaces of all types in applications like **Offices and Restaurants, Hospitals and Hotels, Retailers and Schools, Car Washes and Swimming Pools, Cooling Towers, Energy, Food & Beverage, Water & Gas Utilities Potable and Waste Water Treatment.**

## 1 Partnership Philosophy

Being a privately-owned business means that we are here for the long term and can plan projects with and for our Customers, where both parties benefit. It means we can rapidly take decisions to invest our resources to ensure our optimum solutions are delivered.

## 2 Your Business, Our Solutions

Our extensive product range represents a unique combination of design, development and implementation know how. With a wide and ever evolving range of products and ancillaries, we can offer specific and comprehensive solutions for a variety of industrial applications. Our solutions are conceived to fit seamlessly into your operation, optimizing the processes and applications

## 3 Uniquely Positioned

SEKO's 3 business units, Cleaning & Hygiene, Water & Industry and Industrial Processes puts us in a unique position to be able to respond to the widest range of business needs, with a broad range that allows you the Customer to deal with just one company, simple.



# Pools & Spa

An ever-evolving set of solutions for pristine pools

SEKO has been at the forefront of developing solutions for both residential and professional swimming pools for many years and has always delivered the most efficient, practical and complete solutions for the reseller or for the installer.

SEKO's design and manufacturing processes ensure all our solutions and systems deliver:

## Precision and Consistency

Ensuring that water quality is always at its best, balancing the variables that impact it, demands measuring and dosing systems with the highest accuracy and built with precision in mind, that can function in both indoor and outdoor environments. Parameters measured include: pH, ORP, Conductivity, Chlorine, Oxygen, Turbidity, Peracetic Acid, Ozone, Bromine, Peroxide and Flow rate.

## Safety and Reliability

The safety of customers, installers and operators is paramount, requiring the very best in terms of design and features. From the IP65 class enclosures of our dosing systems and controllers through to the precise choice of materials used to ensure full chemical compatibility over time, safety is at the forefront of our design ethos. Reliability drives good safety, and all SEKO's products are fully tested prior to leaving our warehouse.

## Ease of Use and Installation

As a Global company, SEKO is attuned to the differing needs of individual markets. When we design a new product, we ensure that installation is simple, we use uniform programming language solutions, that are intuitive and easy to understand and which on our Controllers is also available in multiple languages. From our plug and play residential systems, through to our complex professional systems for Water parks, these characteristics are always present.

## Operational Efficiency

From the domestic pool to the largest water parks, the costs of running a pool require close management, and for the larger public pools and water parks the question of water quality, and clarity of appearance become more critical from a brand safety and image point of view. Our SEKONet system offers significant benefits for larger water parks being able to monitor and control up to 99 controllers, giving peace of mind and outstanding operational benefits. From the simple plug and play residential product range, through to our Professional ranges and our Custom build options, SEKO has the range of pumps and controllers that will keep a pool crystal clean.





equipment for

# Residential Pools & Spa

page 08

## Control and dosing systems

### Single pump systems

#### PoolKronos – Basic – PoolBasic – Kontrol Invikta

pH

ORP

Timed dosing

Proportional dosing

### Double pump systems

#### PoolKronos – Basic – PoolBasic – Kontrol Invikta

pH

ORP

Timed dosing

Proportional dosing

### Triple pump systems

#### PoolBasic Pro - Kommander

pH ; ORP ; Flocculant

pH minus ; ORP ; pH plus

pH ; ORP ; Chlorine ; Flocculant

pH ; ORP ; Circulation pump and boiler automation

page 16

## Pre-assembled panel-mounted

pH ; ORP controller

pH ; ORP double peristaltic pumps

pH ; ORP double solenoid driven pumps



# Control and dosing systems

Peristaltic or solenoid driven dosing systems with built in controllers for single, double or multi parameter measurement

Combined systems with peristaltic pumps, solenoid driven dosing pumps and controller. to automatically measure and verify the values of the pool water. The units for residential applications have been designed so they do not require the presence of technical personnel.

- Peristaltic dosing pumps with 2 or 3 PVDF rollers and Santoprene or SekoExtra tubing
- Easy and advanced parameter setting
- Proportional dosing TWM (Time With Modulation) or FWM (Frequency With Modulation)
- Calibration process uses high quality pH and ORP probes
- Extra dosing available thanks to pH and chlorine relay
- Amperometric sensor measures chlorine PPM
- Circulation and boiler controller
- Installation kit included
- No technical skill required
- Remote alarm relay
- Circulation pump checks "Power On" flow trigger
- Input level probe checks product levels
- Multi language menu

## SINGLE PUMP FOR PH OR ORP MEASUREMENT

SEKO's principal offering for the residential pool market provides a user-friendly combination of products consisting of controllers and integrated proportional dosing pumps, the end user can adjust pH and chlorine values as required.



**PoolKronos** single peristaltic dosing systems with a stepper motor pump and 3 PVDF rollers using built in controllers for pH/ORP measurement.



**Basic** combined system with a peristaltic pump and either automatic proportional or timed dosing to adjust key chemical parameters.



**PoolBasic** user-friendly analogue or digital combined system with a peristaltic pump and single measurement with automatic proportional dosing.



**Kontrol Invikta** user-friendly solution combining a solenoid driven pump and single measurement with automatic proportional dosing.



### TWO DOSING PUMPS FOR MULTI-PARAMETER MEASUREMENT

SEKO has developed new advanced combined systems for the hotel and spa markets, featuring amperometric chlorine measurements which ensure full compliance with most local legislation.



**Kontrol Invikta Double** combines two solenoid driven pumps with a multi measurement capability and an automatic proportional dosing.

### TWO OR THREE DOSING PUMPS FOR MULTI-PARAMETER MEASUREMENT

SEKO's double or triple pump systems featuring amperometric chlorine measurements and an innovative system to control circulation pumps and boilers for hotel swimming pools and spas that fully complies with legislation.



**PoolBasic Pro** combines two or three peristaltic pumps and a multi measurement capability with automatic proportional dosing.



**Kommander** advanced combined system with two or three peristaltic pumps with either automatic proportional or timed dosing that adjusts chemical parameters and which comes with built-in functions that enable weekly timed management of the circulation pump and a temperature sensor for boiler activation using a relay.

### INSTALLATION KIT INCLUDED

pH and ORP probes, amperometric chlorine cell  
By-pass and pressurized probe holder  
pH and ORP buffer solutions  
Piping DN50

Brass brush  
5" with 80 µm cartridge  
Ceramic foot filter and FPM non return valve  
4x6 and 8x12 PVC and PE tubes



## PoolKronos 10

PoolKronos 10 is a peristaltic dosing system using **built in controllers for pH/ORP** measurement designed specifically for Swimming Pool applications and offers flexibility of installation, user-friendliness in programming and a constant chemical dosing by pH or ORP analysis.



### POOLKRONOS 10

- for **pH** (6.6 – 8.0)
- for **ORP** (600 – 1000 mV)

### CONSTANT DOSING PUMP

Flow rate 1.5 l/h ; Pressure 1.5 bar

**POOL SIZE** Indoor 1 – 130 m<sup>3</sup> ; Outdoor 1 – 110 m<sup>3</sup>

### MAIN BOARD

Display LCD 7 segment

Power supply with galvanised electrical insulation  
100 – 240 Vac 50/60Hz

### IP65 ENCLOSURE

Dimensions 204 x 76 x 124 mm

Material PP with fiber glass

## PoolKronos 20

PoolKronos 20 builds on the PoolKronos 10 peristaltic system. Designed specifically for Swimming Pool applications, it also uses **built in controllers for pH/ORP analysis** and offers installation flexibility, user-friendly programming and proportional chemical dosing using pH or ORP analysis. The PoolKronos 20 has an **improved LCD display** for ease of reading measurements.



### POOLKRONOS 20

- for **pH** (4 – 10)
- for **ORP** (450 – 900 mV)

### PROPORTIONAL DOSING PUMP

Flow rate 1.5 l/h ; Pressure 1.5 bar

**POOL SIZE** Indoor 1 – 130 m<sup>3</sup> ; Outdoor 1 – 110 m<sup>3</sup>

### MAIN BOARD

Display LCD 8 letters x 2 lines

Power supply with galvanised electrical insulation  
220 Vac 50 Hz cord cable

### IP65 ENCLOSURE

Dimensions 204 x 76 x 124 mm

Material PP with fiber glass

## PoolKronos 50

PoolKronos 50 has the broadest range of measurement of the PoolKronos range coming with a **bigger 16 letter LCD display**. As with the rest of the PoolKronos products, it uses **built in controllers for pH/ORP analysis**. Similarly it is extremely flexible in terms of installation, user-friendly for programming and offers proportional chemical dosing by pH or ORP analysis.



### POOLKRONOS 50

- for pH (0 – 14)
- for ORP (0 – 2000 mV)

**PROPORTIONAL DOSING PUMP** with Stepper Motor pump ; Flow rate 2 l/h ; Pressure 3 bar

**POOL SIZE** Indoor 1 – 140 m<sup>3</sup>; Outdoor 1 – 120 m<sup>3</sup>

### MAIN BOARD

Display LCD 16 letters x 2 lines

Power supply with galvanised electrical insulation  
100 – 240 Vac 50/60Hz

### IP65 ENCLOSURE

Dimensions 207 x 117 x 145 mm

Material ABS

## Basic Series

The Basic Series, despite its name, offers an advanced combined system with a **peristaltic dosing pump and either automatic proportional or timed dosing** to adjust key chemical parameters in domestic, above ground pools and spa.



### BASIC

- PRO Input 4÷20mA or frequency pulse
- TIME by weekly timer built in

### DOSING PUMP

Flow rate 25 – 9750 ml/h ; Pressure 1.5 bar

**POOL SIZE** Indoor 5 – 130 m<sup>3</sup>; Outdoor 5 – 110 m<sup>3</sup>

### MAIN BOARD

Alphanumeric display 16 letters x 2 lines

Power supply 100 – 240 Vac 50/60Hz

### IP65 ENCLOSURE

Dimensions 234 x 162 x 108 mm

Material PP

## PoolBasic LED

PoolBasic LED is a user-friendly **analogue combined system** with a **peristaltic dosing pump and single measurement** with **automatic proportional dosing** that enables chemical adjustment for above ground pools.

### POOLBASIC LED

- for pH (6.2 – 8.2)
- for ORP (480 – 750 mV / 660 – 930 mV)

### PROPORTIONAL DOSING PUMP

Flow rate 1.5 or 5 l/h ; Pressure 1.5 bar

**POOL SIZE** Indoor 5 – 130 m<sup>3</sup> ; Outdoor 5 – 110 m<sup>3</sup>

### MAIN BOARD

Display LED

Power supply 220 – 240 Vac 50/60Hz

### IP65 ENCLOSURE

Dimensions 234 x 162 x 108 mm

Material PP



## PoolBasic Plus

PoolBasic Plus delivers a user-friendly solution combining a **peristaltic dosing pump** and **single measurement** with **automatic proportional dosing** that adjusts the chemical parameters for above ground pools.

### POOLBASIC PLUS

- for pH (0 – 14)
- for ORP (0 – 1000 mV)
- for ORP with shuko (0 – 1000 mV)

### PROPORTIONAL DOSING PUMP

Flow rate 1.5 or 5 l/h ; Pressure 1.5 bar

**POOL SIZE** Indoor 1 – 130 m<sup>3</sup> ; Outdoor 1 – 110 m<sup>3</sup>

### MAIN BOARD

Alphanumeric display 16 letters x 2 lines

Power supply 220 Vac 50/60Hz

### IP65 ENCLOSURE

Dimensions 234 x 162 x 108 mm

Material PP





## Kontrol Invikta

Like PoolBasic Plus, Kontrol Invikta delivers a user friendly solution combining a **solenoid driven dosing pump and single measurement** with **automatic proportional dosing** but for larger volume above ground, indoor and outdoor pools.

### KONTROL INVIKTA

- for pH (0 – 14)
- for ORP (0 – 1000 mV)

### SOLENOID DRIVEN DOSING PUMP

**Proportional dosing FWM**

(Frequency With Modulation)

**Flow rate** 5 l/h ; **Pressure** 5 bar

**Wetted parts** Body in PVC, membrane in PTFE

**POOL SIZE** Indoor 50 – 350 m<sup>3</sup>; Outdoor 50 – 300 m<sup>3</sup>



### MAIN BOARD

**Alphanumeric display** 16 letters x 2 lines

**Power supply** 100 – 240 Vac 50/60Hz

### IP65 ENCLOSURE

**Dimensions** 234 x 162 x 108 mm

**Material** PP

## Kontrol Invikta Double

Designed for larger pools, Kontrol Invikta combines **two solenoid driven dosing pumps** with a **multi measurement capability** and an **automatic proportional dosing system** to deliver balanced chemical parameters for above ground and indoor and outdoor pools.

### KONTROL INVIKTA DOUBLE

- for pH (0 – 14) and ORP (0 – 1000 mV)
- for pH (0 – 14) and ORP (0 – 1000 mV) and **Free chlorine** (0 – 5 ppm with amperometric probe)

### SOLENOID DRIVEN DOSING PUMPS

**Proportional dosing FWM**

(Frequency With Modulation)

**Flow rate** 5 l/h ; **Pressure** 5 bar

**Wetted parts** Body in PVC, membrane in PTFE

**POOL SIZE** Indoor 50 – 350 m<sup>3</sup>; Outdoor 50 – 300 m<sup>3</sup>



### MAIN BOARD

**Alphanumeric display** 16 letters x 2 lines

**Power supply** 100 – 240 Vac 50/60Hz

### IP65 ENCLOSURE

**Dimensions** 234 x 162 x 108 mm

**Material** PP

## PoolBasic Pro

Offering the fullest range of possible measurements, the PoolBasic Pro range still offers a user-friendly solution. It **combines two peristaltic dosing pumps** and a **multi measurement capability** with **automatic proportional dosing** designed for above ground, indoor and outdoor pools. PoolBasic Pro is also available with a **3 pump configuration**.



### POOLBASIC PRO 2 PUMP VERSION

- for pH (0 – 14) and ORP (0 – 1000 mV)
- for pH (0 – 14) and ORP with shuko (0 – 1000 mV)
- for pH Plus (0 – 14) and pH Minus (0 – 14)
- for pH (0 – 14) and Flocculant dosage
- for pH (0 – 14) and Hydrogen peroxide<sup>(\*)</sup>
- for pH (0 – 14) and ORP (0 – 1000 mV) and Conductivity (0 – 20000 µS)
- for pH (0 – 14) and ORP (0 – 1000 mV) and Free chlorine (0 – 5 ppm)<sup>(\*\*)</sup>

### POOLBASIC PRO 2 PUMP MODBUS PROTOCOL COMMUNICATION VERSION

- for pH (0 – 14) and ORP (0 – 1000 mV) and Free chlorine (0 – 5 ppm)<sup>(\*\*)</sup>

### POOLBASIC PRO 2 PUMP B-WEEKLY TIMER VERSION

- for pH (0 – 14) and Hydrogen peroxide<sup>(\*)</sup>

### POOLBASIC PRO 2 PUMP SPA VERSION

- for pH (0 – 14) and ORP (0 – 1000 mV)
- for pH (0 – 14) and ORP (0 – 1000 mV) and Free chlorine (0 – 5 ppm)<sup>(\*\*)</sup>

### POOLBASIC PRO 3 PUMP VERSION

- for pH (0 – 14) and ORP (0 – 1000 mV) and Flocculant dosage
- for pH Plus (0 – 14) and ORP (0 – 1000 mV) and pH Minus (0 – 14)
- for pH (0 – 14) and ORP (0 – 1000 mV) and Free chlorine (0 – 5 ppm)<sup>(\*\*)</sup> and Flocculant dosage

### PROPORTIONAL DOSING PUMPS

Flow rate 0.4 or 1.5 or 5 l/h ; Pressure 1.5 bar

**POOL SIZE** Indoor 1 – 130 m<sup>3</sup>; Outdoor 1 – 110 m<sup>3</sup>

### MAIN BOARD

Alphanumeric display 16 letters x 2 lines

Power supply 220 Vac 50/60Hz

### IP65 ENCLOSURE

Dimensions 234 x 162 x 108 mm

Material PP

(\*) By time and temperature compensation

(\*\*) With Free Chlorine Amperometric probe

## Kommander

Kommander is an advanced combined system available with **two or three peristaltic pumps** with **either automatic proportional or timed dosing** that adjusts chemical parameters for both outdoor pools and spa centers. Furthermore, the Kommander comes with additional functions built in. The first is a **weekly timer to regulate the circulation pump** and the second is a **temperature sensor that activates the boiler using a relay switch**.



### KOMMANDER 2 PUMP VERSION

- for pH (0 – 14) and ORP (0 – 1000 mV)

### KOMMANDER 3 PUMP VERSION

- for pH (0 – 14), ORP (0 – 1000 mV) and Flocculant dosage

### PROPORTIONAL DOSING PUMPS

Flow rate 1.5 or 5 l/h ; Pressure 1.5 bar

**POOL SIZE** Indoor 1 – 130 m<sup>3</sup>; Outdoor 1 – 110 m<sup>3</sup>



### CIRCULATION PUMP AND BOILER ACTIVATION BY POWERED RELAY max 1.5 kW load

### MAIN BOARD

Alphanumeric display 16 letters x 2 lines

Power supply 220 Vac 50/60Hz

### IP65 ENCLOSURE

Dimensions 234 x 162 x 108 mm

Material PP

# Pre-assembled panel-mounted

The pre-assembled panels of SEKO's range offer advanced solutions for residential swimming pools. A flexible system for quick installation, that combines a pre-selected number of products assembled on a small panel, including a bypass probe holder, electrical box and controller unit.

- Advanced parameter setting
- Proportional dosing TWM (Time With Modulation) or FWM (Frequency With Modulation)
- Calibration process uses high quality pH and ORP probes
- Extra dosing available thanks to pH and chlorine relay
- Installation kit included
- Amperometric sensor measures chlorine PPM
- No technical skill required
- Remote alarm relay
- Circulation pump checks power on "Flow Trigger"
- Input level probe checks product levels
- Multi language menu
- Circulation and boiler controller

## INSTALLATION KIT INCLUDED

pH and ORP probes  
pH and ORP buffer solutions  
Ceramic foot filter and FPM non return valve  
4x6 and 8x12 PVC and PE tubes



## Easy Panel

A **simple pre-assembled panel with an automatic proportional dosing system** for simple chemical parameter regulation for indoor and outdoor pools.

### EASY PANEL

- for pH (0 – 14) and ORP (0 – 1000 mV)
- for pH (0 – 14) and ORP (0 – 1000 mV) and **Free chlorine** (0 – 5 ppm with amperometric probe)

### HYDRAULIC PROBE HOLDER

2 PSS7 (single probe)  
2 Washable cartridge filters (80 µm)

### MAIN BOARD

**Power supply** 100 – 240 Vac 50/60Hz  
**Cable Box** with power supply 230Vac to connect external dosing pump  
**Relay 250 V 10 A** (Resistive Load) each measure



### IP65 PRE-ASSEMBLED PANEL-MOUNTED

**Dimensions** 630 x 420 x 10 mm

**Material** PP



## Easy Basic

An entry level pre-assembled panel with an automatic proportional dosing system for simple chemical parameter regulation for above ground pools.

### EASY BASIC

- for pH (0 – 14)
- for ORP (0 – 1000 mV)

### HYDRAULIC PROBE HOLDER

2 PSS7 (single probe)

2 Washable cartridge filters (80 µm)

### PROPORTIONAL DOSING PUMPS

Flow rate 1.5 or 5 l/h; Pressure 1.5 bar

Santoprene tubing

**POOL SIZE** Indoor 1 – 130 m<sup>3</sup>; Outdoor 1 – 110 m<sup>3</sup>



### MAIN BOARD

Alphanumeric display 16 letters x 2 lines

Power supply 220 Vac 50/60Hz

### IP65 PRE-ASSEMBLED PANEL-MOUNTED

Dimensions 630 x 420 x 10 mm

Material PP

## Easy Invikta

A simple pre-assembled panel with an automatic proportional dosing system for simple chemical parameter regulation for indoor and outdoor pools.

### EASY INVIKTA

- for pH (0 – 14)
- for ORP (0 – 1000 mV)

### HYDRAULIC PROBE HOLDER

2 PSS7 (single probe)

2 Washable cartridge filters (80 µm)

### SOLENOID DRIVEN DOSING PUMPS

Proportional dosing FWM

(Frequency With Modulation)

Flow rate 5 l/h ; Pressure 5 bar

Wetted parts Body in PVC, membrane in PTFE

**POOL SIZE** Indoor 50 – 350 m<sup>3</sup>; Outdoor 50 – 300 m<sup>3</sup>



### MAIN BOARD

Alphanumeric display 16 letters x 2 lines

Power supply 100 – 240 Vac 50/60Hz

### IP65 PRE-ASSEMBLED PANEL-MOUNTED

Dimensions 630 x 420 x 10 mm

Material PP



equipment for

# Professional Pools

page 20

## Photometer Systems and PoolPhotometer

DPD Free Chlorine ; pH ; ORP ; Temperature

DPD Free/Total chlorine ; pH ; ORP ; Temperature

DPD Free/Total and Combine chlorine ; pH ; ORP ; Temperature

page 22

## Kontrol Panel and Kontrol Guard Tech

pH ; ORP ; Temperature

pH ; Free chlorine (Amperometric / Potentiostatic cell) ;  
Temperature

pH ; Free Chlorine (Amperometric / Potentiostatic Cell) ; ORP ;  
Temperature

pH ; Free/Total and Combine chlorine (Amperometric /  
Potentiostatic Cell) ; ORP ; Temperature

page 26

## Kontrol Tekna panels with controllers

pH ; ORP ; Temperature

pH ; Free/Total chlorine ; Temperature

pH ; Peracetic acid ; Temperature

pH ; Hydrogen peroxide ; Temperature

# Photometer

The main solution for professional swimming pools, Photometer is a complete controller that checks free, total and combined chlorine in the water. Thanks to its use of the DPD analysis method, it ensures a perfect results every time.

- Professional parameter setting
- Proportional dosing
- Calibration process uses high quality pH and ORP probes
- Extra dosing available thanks to pH and chlorine relay
- Installation kit included
- DPD analysis method measures Chlorine PPM
- Technical skill required
- Remote alarm relay
- Input level probe checks product levels
- Graphic display controller provides graphical historical reports for each measure thanks to the built-in data logger
- Multilingual controller interface makes for simple operation

## MEASURING RANGE

pH 0 – 14

ORP  $\pm 1500$  mV

Chlorine 0 – 5 ppm<sup>(\*)</sup>

Combined chlorine 0 – 1/ 5/ 10/ 20/ 200 ppm<sup>(\*\*)</sup>

(\*) DPD Method Light wavelength 520 nm

(\*\*) Using software

Temperature : 0 – 100°C with PT100/PT1000 sensors

## INSTALLATION KIT INCLUDED

pH and ORP Probes

pH and ORP Buffer solutions

DPD Buffer Solution



## HYDRAULIC PROBE HOLDERS

Features a new hydraulic device that comes with a water drain dedicated to chemical reagents that are used during chlorine measuring. This allows a reduction in the amount of water used for chlorine measurement.

The water that is used for the pH and ORP probes can be returned to the compensation basin, while only the water containing chemical DPD reagent will be discharged into special tanks ensuring compliance with local laws. Fast installation comes thanks to quick couplings for water Inlet and outlet fixings.

The optical unit assures a very high accuracy level of chlorine measurement with a 520 nm sensor and LED light device. All Photometer use DPD powder for dilution prior to use that offers a reliable solution at each application.



Probe holder plexiglass body and photometer chamber

IN/OUT tubes 8x12 mm

Back pressure

Temperature 60 °C



## Photometer Systems

The SEKO Photometer Systems combine "6 parameter" multi-parameter controllers with a sampler dedicated to chlorine measurement.

### PHOTOMETER SYSTEMS

- for Chlorine and pH
- for Chlorine and pH and ORP
- for Chlorine and Combined chlorine and pH and ORP

### DPD PUMP

Peristaltic pump with 2 mechanical support

Silicon tube 3x5 mm

Flow rate 0.15 cc sample measure

Back pressure

DPD Chemical 1 liter 24 days at 5 minute period sample

### MAIN BOARD

Graphic display 240x128 pixel with back light

Power supply 100 – 240 Vac 50/60Hz



### IP65 ENCLOSURE BOX

Dimensions 276 x 514 x 127 mm

Material ABS

## Pool Photometer

The SEKO Pool Photometer features a "4 parameter" multi-parameter controllers combined with a sampler dedicated to chlorine measurement.

### POOL PHOTOMETER

- for Chlorine and pH and ORP
- with Data logger included
- with Probe holder for Hydraulic closed loop

### DPD PUMP

Peristaltic pump with 2 mechanical support

Silicon tube 3x5 mm

Flow rate 0.07 cc sample measure

Back pressure

DPD Chemical 1 liter 24 days at 5 minute period sample

### MAIN BOARD

Graphic display 240x128 pixel with back light

Power supply 100 – 240 Vac 50/60Hz



### IP65 ENCLOSURE BOX

Dimensions 630 x 420 x 10 mm

Material PP

# Kontrol Panels

Ultimate flexibility offered for the professional pool market comes from the Kontrol 800 panel range, which assures a complete and superior system to control large complex pool systems.

- Professional parameter setting
- Proportional dosing
- Calibration process uses high quality pH and ORP probes
- Extra dosing available thanks to pH and chlorine relay
- Installation kit included
- Technical skill required
- Amperometric measurement of chlorine PPM value
- Remote alarm relay
- Input level probe checks product levels
- Multi language menu
- Tekna Panel skid for quick installation

## MEASURING RANGE

pH 0 – 14

ORP  $\pm 2000$  mV

Chlorine 0 – 5 ppm

Chlorine dioxide, Free amperometric chlorine,  
Total potentiostatic chlorine, Combined chlorine<sup>(\*)</sup>

0 – 1/ 5/ 10/ 20/ 200 ppm

(\*) Using software

## HYDRAULIC PROBE HOLDERS

Transparent modular probe holder PSS-Plexi

IN/OUT tubes 8x12 mm

Pressure 5 bar

Temperature 60 °C

## INSTALLATION KIT INCLUDED

pH and ORP probes, amperometric chlorine cell

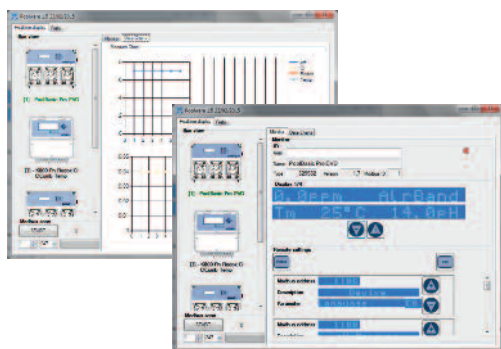
By-pass probe holder

pH and ORP buffer solutions

Brass brush

5" with 80  $\mu$ m cartridge

Ceramic foot filter and FPM non return valve



## PoolWare Kit for Kontrol 800 Panel

PoolWare software can control up to 99 Kontrol 800 panels simultaneously thanks to a data network.

It is possible to connect every unit to a PC which means a single software programme can set and manage all the system parameters.

## Kontrol 800 Panel

A pre-assembled, panel-mounted system that manages and adjusts the pH and chlorine levels with automatic proportional dosing for public pools.

### WITH AMPEROMETRIC PROBES

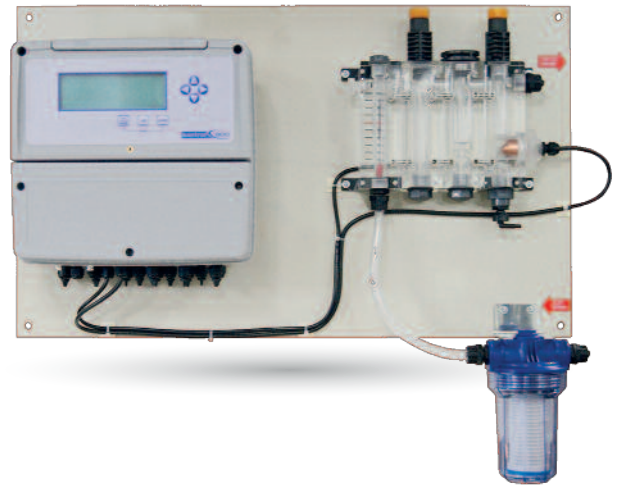
- for pH and ORP
- for Chlorine
- for Chlorine and pH
- for Chlorine and pH and ORP

### WITH POTENZIOSTATIC PROBES

- for Chlorine and Chlorine dioxide
- for Chlorine and Chlorine dioxide and pH
- for Chlorine and Chlorine dioxide and pH and ORP

### HYBRID MODEL

- Free amperometric chlorine and total potentiostatic chlorine and combined chlorine (using software) and pH and ORP



### MAIN BOARD

Alphanumeric display 20 letters x 4 lines

Power supply 100 – 240 Vac 50/60Hz

### IP65 PRE-ASSEMBLED PANEL-MOUNTED

Dimensions 276 x 514 x 127 mm

Material PP

## Tekna Panel

### Skid for Kontrol 800 Panel

A pre-assembled, panel-mounted skid featuring solenoid driven dosing pumps and controllers that comes in both a digital and analogue version.

### TEKNA PANEL

- ANALOGUE 2 Tekna AKL
- DIGITAL 2 Tekna TPG

### SOLENOID DRIVEN DOSING PUMPS

Tekna AKL 603 or 803 analogue solenoid driven dosing pump with constant manually adjustable flow rate.

Tekna TPG 803 digital solenoid driven dosing pump with manually adjustable constant flow rate, or with proportional flow rate that is based on readings from an external analogue (4 – 20 mA) or digital signal (water meter)

(603) Flow rate 4 – 8 l/h ; Pressure 2 – 12 bar

(803) Flow rate 20 – 110 l/h ; Pressure 0,1 – 5 bar

Wetted parts Body in PVDF ; Membrane in PTFE



### POOL SIZE

(603) Indoor 150 – 600 m<sup>3</sup>; Outdoor 100 – 500 m<sup>3</sup>

(803) Indoor 300 – 1500 m<sup>3</sup>; Outdoor 200 – 1200 m<sup>3</sup>

### MAIN BOARD

Alphanumeric display 16 letters x 2 lines

Power supply 100 – 240 Vac 50/60Hz

### IP65 PRE-ASSEMBLED PANEL-MOUNTED

Dimensions 600 x 300 x 10 mm

Material PVC

# Kontrol Guard Tech

The Kontrol Guard Tech is the most advanced model in the SEKO range of controllers. The new Kontrol Guard Tech unit, with its 5" digital graphic display, combines the traditional elements of control and dispensing with a totally digital control system, which facilitates the setting and monitoring of various parameters, depending on the application, using and comparing historic values to identify or analyze any errors.

- New box design, with increased instrument protection
- Graphic display 5" (240x128 pixel) for easier reading
- Control unit with full parameter access for complete monitoring
- Communication via Serial Port RS485 by MODBUS RTU/ASCII protocol for remote control interface
- Easy to set parameters for quick technical overview
- Multiple language menu for flexible operator interface
- Control unit has galvanized electrical and measuring insulation to ensure reliable performance
- CE/UL compliant to ensure full health and safety compliance

## MEASURING RANGE

pH 0 – 14

ORP  $\pm$  2000 mV

Chlorine 0 – 5 ppm

Chlorine and Chlorine dioxide

0 – 1/ 5/ 10/ 20/ 200 ppm

Free amperometric chlorine

0 – 1/ 5/ 10/ 20/ 200 ppm

Total potentiostatic chlorine

0 – 1/ 5/ 10/ 20/ 200 ppm

Combined chlorine<sup>(\*)</sup>

0 – 1/ 5/ 10/ 20/ 200 ppm

Turbidity<sup>(\*)</sup>

0 – 4/ 40/ 400/ 4000 NTU

(\*) Using software

## HYDRAULIC PROBE HOLDERS

Transparent modular probe holder PSS-Plexi

IN/OUT tubes 8x12 mm

Pressure 5 bar

Temperature 60 °C

## MAIN BOARD

Graphic display 5" 20 letters x 4 lines

Power supply 100 – 240 Vac 50/60Hz

## IP65 CABINET

Dimensions 440 x 740 x 175 mm

Material PP

## INSTALLATION KIT INCLUDED

pH and ORP probes, amperometric chlorine cell

By-pass probe holder

pH and ORP buffer solutions

Brass brush

5" with 80 µm cartridge





#### INTUITIVE ICONS AND CLEAR DISPLAY

Thanks to the high contrast image of the graphic display, and the easy to read and self explanatory icons that are used, the operator is guided step by step through the applications.

#### WITH AMPEROMETRIC PROBES

- for Chlorine
- for Chlorine and pH
- for Chlorine and pH and ORP
- for Chlorine and pH and Turbidity

#### WITH POTENZIOSTATIC PROBES

- for Chlorine and Chlorine dioxide
- for Chlorine and Chlorine dioxide and pH
- for Chlorine and Chlorine dioxide and pH and ORP

#### HYBRID MODEL

- Free amperometric chlorine, Total potentiostatic chlorine, Combined chlorine and pH and ORP
- Free amperometric chlorine, Total potentiostatic chlorine, Combined chlorine and pH and ORP and Turbidity

#### PH/ORP MODEL

- for pH and ORP



# Kontrol Tekna panels

Kontrol Tekna panels benefit from the robust Tekna range of pumps, offering the professional pool operator peace of mind and a completeness of range.

- Professional parameter setting
- Proportional dosing
- Calibration process uses high quality pH and ORP probes
- Extra dosing available thanks to pH and chlorine relay
- Installation kit included
- Technical skill required
- Remote alarm relay
- Multi language menu
- Potentiostatic measurement of chlorine PPM value

## TEKNA FEATURES

### Compatible

The PVDF pump head that comes as standard offers complete compatibility for almost all chemicals that may be used in swimming pool water treatment. The ceramic ball valve which also comes as standard improves the pumping reliability and the chemical compatibility of the whole liquid end.

### Reliable

Advanced design and manufacturing processes allows SEKO's diaphragm to have a unique life expectancy. Made of pure solid PTFE, the diaphragm is compatible with most chemicals and has been rigorously tested allowing SEKO to guarantee its diaphragms for 5 years that means routine diaphragm replacement is no longer needed.

## MEASURING RANGE

**pH** 0 – 14

**ORP**  $\pm 1500$  mV

**Chlorine and Chlorine dioxide**

0 – 0.5/ 1/ 2/ 5/ 10 / 20/ 200 ppm

**Peracetic acid**

0 – 500/ 2000/ 10.000/ 20.000 ppm

**Hydrogen peroxide**

0 – 500/ 1000/ 2000/ 10000/ 100000 ppm

## HYDRAULIC PROBE HOLDERS

**Transparent modular probe holder** PSS-Plexi

**IN/OUT tubes** 8x12 mm

**Pressure** 5 bar

**Temperature** 60 °C

## MAIN BOARD

**Alphanumeric display** 16 letters x 2 lines

**Power supply** 100 – 240 Vac 50/60Hz

## IP65 PRE-ASSEMBLED PANEL-MOUNTED

**Dimensions** 700 x 420 x 10 mm

**Material** PVC

## INSTALLATION KIT INCLUDED

pH and ORP probes, amperometric chlorine cell

By-pass probe holder

pH and ORP buffer solutions

Brass brush

5" with 80  $\mu$ m cartridge

Ceramic foot filter and FPM non return valve



## Tekna TPR Panel

A **two solenoid driven dosing pump with control instruments pre-assembled panel-mounted system** that features integrated by-pass hydraulic probe holders and transparent filter housing.

Comes with pre-wired connections contained within a IP65 standard electrical box.

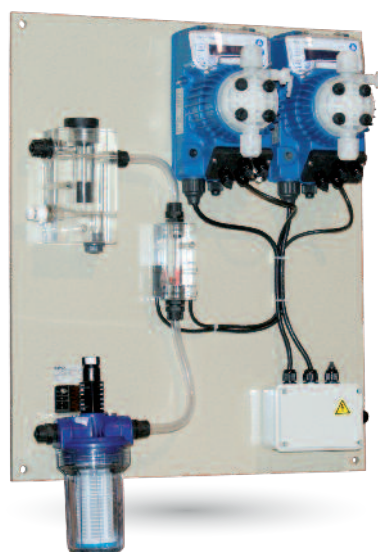
### TEKNA TPR PANEL

- pH and ORP

#### POOL SIZE

(603) Indoor 150 – 600 m<sup>3</sup>; Outdoor 100 – 500 m<sup>3</sup>

(803) Indoor 300 – 1500 m<sup>3</sup>; Outdoor 200 – 1200 m<sup>3</sup>



### PROPORTIONAL SOLENOID DRIVEN DOSING PUMPS

2 Tekna TPR 603 or 803 model with pH/ORP control meter built in

(603) Flow rate 4 – 8 l/h ; Pressure 2 – 12 bar

(803) Flow rate 20 – 110 l/h ; Pressure 0.1 – 5 bar

Wetted parts Body in PVDF ; Membrane in PTFE

## Tekna TPR-TMP Panel

Offering a **broader range of parameter measurements**, Tekna TPR-TMP Panel is a **two solenoid driven dosing pump with control instruments pre-assembled panel-mounted system** that features integrated by-pass hydraulic probe holders and transparent filter housing.

Comes with pre-wired connections contained within a IP65 standard electrical box.

### TEKNA TPR-TMP PANEL

- pH and ORP and Chlorine and Chlorine dioxide and Peracetic acid and Hydrogen peroxide

#### POOL SIZE

(603) Indoor 150 – 600 m<sup>3</sup>; Outdoor 100 – 500 m<sup>3</sup>

(803) Indoor 300 – 1500 m<sup>3</sup>; Outdoor 200 – 1200 m<sup>3</sup>



### PROPORTIONAL SOLENOID DRIVEN DOSING PUMPS

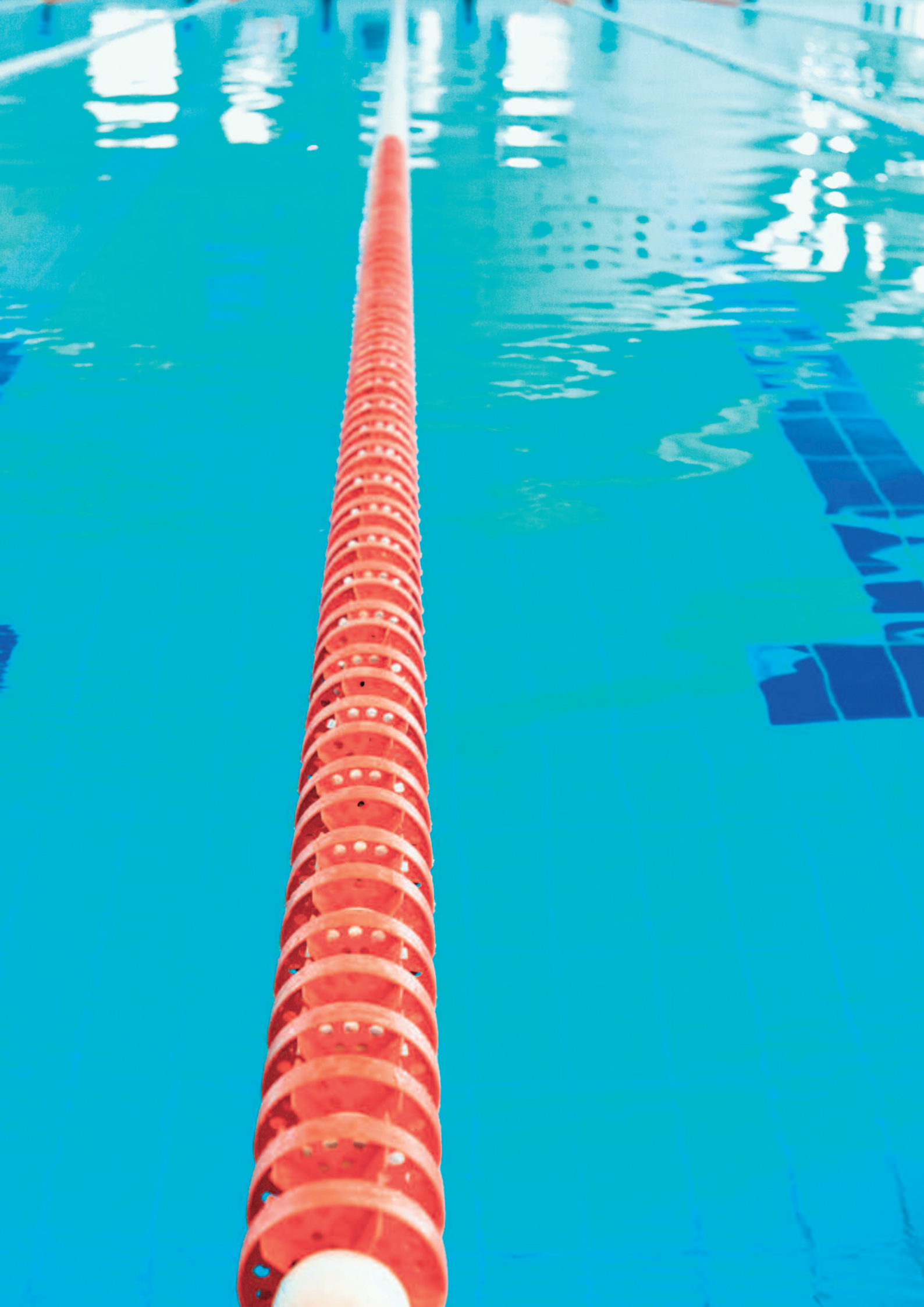
Tekna TPR 603 or 800 model with pH/ORP control meter built in

1 Tekna TMP 603 or 800 model with Chlorine, Hydrogen Peroxide or Peracetic acid control meter

(603) Flow rate 4 – 8 l/h ; Pressure 2 – 12 bar

(803) Flow rate 20 – 110 l/h ; Pressure 0.1 – 5 bar

Wetted parts Body in PVDF ; Membrane in PTFE



equipment for

# Pools & Spa

page 30

## Dosing pumps

P Series

Dynamik

Kronos

Invikta

Kompact

Tekna

Maxima

Spring

page 32

## Controllers

Kontrol 50

Kontrol 42

Kontrol 100

Kontrol 500

page 33

## Blowers - Side channel compressors

BL040

BL050

BL820

page 33

## Pool Cleaning Station

# Dosing pumps

A complete range of peristaltic, solenoid driven and motor driven dosing pumps for Swimming pool applications with options to meet any need.

## P Series

Basic peristaltic pumps for residential above ground pools

### MODELS

<b>PE1.5</b>	Flow rate 1.5 l/h ; Pressure 0.5 bar
<b>PE5</b>	Flow rate 5 l/h ; Pressure 0.5 bar
<b>PE4</b>	Flow rate 4 l/h ; Pressure 0.5 bar
<b>PE7</b>	Flow rate 7 l/h ; Pressure 0.5 bar



**POOL SIZE** Indoor 1 – 150 m<sup>3</sup> ; Outdoor 1 – 110 m<sup>3</sup>

## Dynamik

Advanced peristaltic pumps for seasonal dosing action or micro dosing application

### MODELS

<b>CK</b>	Flow rate 4 , 2 , 1 l/h ; Pressure 1.5 bar
<b>Pro</b>	Flow rate 2.5 – 9750 ml/h ; Pressure 1.5 bar



**POOL SIZE** Indoor 1 – 250 m<sup>3</sup> ; Outdoor 1 – 110m<sup>3</sup>

## Kronos FM

Professional peristaltic pumps with stepper motor for high accuracy dosing action

### MODELS

<b>50 FM02</b>	Flow rate 2 l/h ; Pressure 3 bar
<b>50 FM10</b>	Flow rate 10 l/h ; Pressure 2 bar
<b>50 FM15</b>	Flow rate 15 l/h ; Pressure 0.1 bar



**POOL SIZE** Indoor 1 – 280 m<sup>3</sup> ; Outdoor 1 – 160 m<sup>3</sup>

## Invikta

Basic solenoid driven dosing pumps for residential outdoor pools

### MODELS

<b>KCL 633</b>	Flow rate 5 l/h ; Pressure 5 bar
<b>KCL 632</b>	Flow rate 2 l/h ; Pressure 7 bar



**POOL SIZE** Indoor 1 – 250m<sup>3</sup> ; Outdoor 1 – 110m<sup>3</sup>

## Kompact

Advanced solenoid driven dosing pumps for medium sized indoor and outdoor pools

### MODELS

<b>AML 200</b>	Flow rate 5 or 3 l/h ; Pressure 8 or 10 bar
<b>AMM 200</b>	Flow rate 5 or 3 l/h ; Pressure 8 or 10 bar



**POOL SIZE** Indoor 5 – 250 m<sup>3</sup> ; Outdoor 5 – 110 m<sup>3</sup>



## Tekna

Professional wall mounted solenoid driven dosing pumps for medium or large indoor and outdoor pools

### MODELS

ANALOGUE AKL – DIGITAL TPG; TPR; TCK

### VERSION

**603** Flow rate 4 – 8 l/h ; Pressure 2 – 12 bar  
**800** Flow rate 7 – 18 l/h ; Pressure 1 – 16 bar  
**803** Flow rate 20 – 110 l/h ; Pressure 0.1 – 5 bar

### POOL SIZE

**Indoor** 5 – 250 m<sup>3</sup> ; **Outdoor** 5 – 110 m<sup>3</sup>  
**Indoor** 200 – 750 m<sup>3</sup> ; **Outdoor** 150 – 650 m<sup>3</sup>  
**Indoor** 300 – 1500 m<sup>3</sup> ; **Outdoor** 200 – 1200 m<sup>3</sup>



## Maxima

Professional base mounted solenoid driven dosing pumps features new revolutionary electronic stroke length regulation for medium or large indoor and outdoor pools

### MODELS

ANALOGUE MKL – DIGITAL MPG; MPR

### VERSION

**603** Flow rate 4 – 8 l/h ; Pressure 2 – 12 bar  
**800** Flow rate 7 – 18 l/h ; Pressure 1 – 16 bar  
**803** Flow rate 20 – 110 l/h ; Pressure 0.1 – 5 bar

### POOL SIZE

**Indoor** 5 – 250 m<sup>3</sup> ; **Outdoor** 5 – 110 m<sup>3</sup>  
**Indoor** 200 – 750 m<sup>3</sup> ; **Outdoor** 150 – 650 m<sup>3</sup>  
**Indoor** 300 – 1500 m<sup>3</sup> ; **Outdoor** 200 – 1200 m<sup>3</sup>



## Tekba

Professional digital solenoid driven dosing pump with mechanical stroke length regulation for medium or large indoor and outdoor pools

### MODELS

ANALOGUE EML – DIGITAL EMC; EMM

### VERSION

**603** Flow rate 4 – 8 l/h ; Pressure 2 – 12 bar  
**800** Flow rate 7 – 18 l/h ; Pressure 1 – 16 bar  
**803** Flow rate 20 – 110 l/h ; Pressure 0.1 – 5 bar

### POOL SIZE

**Indoor** 5 – 250 m<sup>3</sup> ; **Outdoor** 5 – 110 m<sup>3</sup>  
**Indoor** 200 – 750 m<sup>3</sup> ; **Outdoor** 150 – 650 m<sup>3</sup>  
**Indoor** 300 – 1500 m<sup>3</sup> ; **Outdoor** 200 – 1200 m<sup>3</sup>



## Spring

Professional plunger motor driven dosing pumps for large indoor and outdoor pools

### MODELS

**MS1** Flow rate 220 l/h ; Pressure 7 bar  
 Flow rate 310 l/h ; Pressure 7 bar  
**MS0** Flow rate 30 l/h ; Pressure 5 bar  
 Flow rate 42 l/h ; Pressure 5 bar

### POOL SIZE

**MS1** **Indoor** 4000 – 10000 m<sup>3</sup> ; **Outdoor** 1000 – 6000 m<sup>3</sup>  
**MS0** **Indoor** 400 – 2200 m<sup>3</sup> ; **Outdoor** 300 – 1800 m<sup>3</sup>



# Controllers

A complete range of control instruments for Swimming pool applications with the flexibility to meet every need.

## Kontrol Flow 50

Advanced controller

### MODELS

Flow rate 99999,99 l/sec

---



## Kontrol 42

Advanced double parameter controller

### MODELS

pH 0 – 14 ; ORP  $\pm 1500$  mV

pH 0 – 14 ; ORP  $\pm 1500$  mV; Flow rate 99999,99 l/sec

---



## Kontrol 100

Professional single parameter controller

### MODELS

pH 0 – 14

ORP  $\pm 1500$  mV

Chlorine and Chlorine dioxide 0 – 0.5/ 1/ 2/ 5/ 10/ 20/200 ppm

---



## Kontrol 500

Professional single parameter controller with data logger included

### MODELS

pH 0 – 14

ORP  $\pm 1500$  mV

Chlorine and Chlorine dioxide 0 – 0.5/ 1/ 2/ 5/ 10/ 20/200 ppm

---



# Blowers - Side channel compressors

Blower system for Spa and Professional Swimming pool applications.

- We carry a complete line of high quality, quiet yet powerful replacement air blowers for your swimming pools and spas
- Air Blower provide circulation and therapeutic action for both pools and spas.



## BL040

Single impeller, single and 3-Phase

**Flow rate** 145 m<sup>3</sup>/h

**Pressure** up to 200 mbar

**Vacuum** up to -170 mbar

**Noise** 63 dB A



## BL050

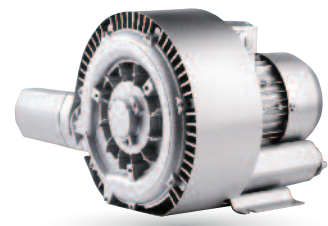
Single impeller  
Single and 3-Phase

**Flow rate** 210 m<sup>3</sup>/h

**Pressure** up to 270 mbar

**Vacuum** up to -220 mbar

**Noise** 64 dB A



## BL820

Double impeller 3-Phase

**Flow rate** 900 m<sup>3</sup>/h

**Pressure** up to 370 mbar

**Vacuum** up to -280 mbar

**Noise** 74 dB A

# Pool Cleaning Station

Specifically designed for intensive cleaning and disinfection of floors and surfaces.

- It avoids water wastage contributing to environmental protection and cost optimization
- Offers effective mixing thanks to assisted calibration
- Works without electricity or compressed air







# Accessories

page 36

## Probes

pH

ORP

Chlorine

Temperature

Turbidity

Flow rate

page 38

**Modular probe holder** (Patented product)  
and **By-Pass probe holders**

page 39

**Clamp saddles, Cables, Buffer solution pH/ORP and  
5" Housings for filter cartridges**

page 40

**Filter cartridges, Water meter pulse sender  
and Tanks**

page 41

**Uncovered tank and Mixers**

# Accessories

SEKO has developed a full range of accessories to ensure technical installers have every element they need to deliver the most professional installation.

## SPH pH probes

### MODELS

SPH-1 1.5M	Range 2 – 12 pH ; Pressure 0 – 6 bar ; Body Epoxy ; Membrane Glass ; Connections Cable 1.5 m + BNC
SPH-1 6M	Range 2 – 12 pH ; Pressure 0 – 6 bar ; Body Epoxy ; Membrane Glass ; Connections Cable 6 m + BNC
SPH-2	Range 2 – 12 pH ; Pressure 0 – 6 bar ; Body Epoxy ; Membrane Glass ; Connections S8
SPH-3 WW	Range 2 – 12 pH ; Pressure 0 – 6 bar ; Body Glass ; Membrane Glass ; Connections S8



## SRH ORP probes

### MODELS

SRH-1 1.5M	Range $\pm 1000$ mV ; Pressure 0 – 6 bar ; Body Epoxy ; Membrane Platinum wire ; Connections Cable 1.5 m + BNC
SRH-1 6M	Range $\pm 1000$ mV ; Pressure 0 – 6 bar ; Body Epoxy ; Membrane Platinum wire ; Connections Cable 6 m + BNC
SPH-1 6M AU	Range $\pm 2000$ mV ; Pressure 0 – 6 bar ; Body Epoxy ; Membrane Gold ; Connections Cable 6 m + BNC
SRH-3 PT	Range $\pm 2000$ mV ; Pressure 0 – 6 bar ; Body Glass ; Membrane Platinum wire ; Connections S8



## CL Chlorine potentiostatic probes

Professional chlorine potentiostatic probe, that uses an amperometric cell and membrane cup.

### MODELS

F-CL 2	Range 0 – 10 ppm ; pH 4 – 12 ; Flow rate 30 l/h ; Temperature 45°C ; Pressure 0,5 bar ; Membrane M48 ; Electrolyte ECC1 ; Application fields Organic free chlorine
F-CL 3	Range 0 – 10 ppm ; pH 4 – 11 ; Flow rate 30 l/h ; Temperature 45°C ; Pressure 0,5 bar ; Membrane M48 G ; Electrolyte ECS1 Gel ; Application fields Inorganic free chlorine





## GPC Grounding Pipe Coupling

To obtain the best performance in pH and Redox measurements when using Tekna TPR pump with electrical grounding SEKO recommends using the GPC Series Grounding Pipe.

### MODELS

**GPC-63** DN63 diameter connection to glue tubes to PVC body

**GPC-50** DN50 diameter connection to glue tubes to PVC body

**FEATURES** Pressure 3 bar ; Temperature 50°C



## PT Temperature probes

### MODELS

**PT 100V** Range 0 – 100°C ; Pressure 0 – 7 bar ; Body Pyrex ;  
Connections 5 m 3-wire cable

**PT 100V PG** Range 0 – 100°C ; Pressure 0 – 7 bar ; Body Pyrex ;  
Connections 6 m 3-wire cable

**PT 100 NUT** Range 0 – 100°C ; Pressure 0 – 7 bar ; Body PP ;  
Connections 1 m 2-wire cable

**RNC** Pressure 0 – 7 bar ; Body AISI 304



## S461/LT Turbidimetric probes

The measurement principle is based on the deviation of light produced by suspended particles in the liquid.

**FEATURES** Measure 0,02 – 10 FTU/NTU ; Pressure 0 – 4 bar ; Temperature 0 – 60°C

**BODY** material PVC special optical glass and Viton threaded connection 1" GAS

**PROJECTOR AND SENSORS** Scattering at 90° Light absorption with 10 m cable



## SFW Paddlewheel flow sensor

The SFW paddle wheel flow sensor is designed to be used with every kind of solid-free liquid. The sensor offers highly consistent and repeatable measurements of flow from 0.15 m/s (0.5 ft/s) producing a frequency output signal.

### MODELS

**SFW-1** Size DN 100 – 4"

**SFW-2** Size DN 200 – 8"

**FLUID** Speed Range 0.15 to 8m/s  
[0.5 to 25ft/s]

### MATERIALS

**Sensor body** PVC-C ;

**O-rings** FPM ; **Rotor** ECTFE (Halar®) ;

**Shaft** Ceramic (Al<sub>2</sub>O<sub>3</sub>) ; **Bearings**

Ceramic (Al<sub>2</sub>O<sub>3</sub>) ;

**IP65** protection degree



## PSS-PLEXI Modular probes holder (Patented product)

Professional modular probe holder with amperometric cell for Free Chlorine measurement.

### MODELS

- Flux / pH / ORP)
- Flux /pH / Amperometric chlorine
- Flux / pH / ORP/ Amperometric chlorine
- Flux /pH / Potentistatic chlorine

Connection In/OUT 8x12 mm (tube)  
Probes connection 24 mm  
Hydraulic By-pass  
Max. Temperature 60°C  
Max. Pressure 5 bar  
Material Plexiglas without color



## By-pass probe holder

By-pass probe holder for quick installation pH, ORP and Temperature probes.

**PSS 7 SINGLE** Connection process By-Pass ; No. Probes 1 ; Temperature 0 – 40°C ; Pressure 0 – 6 bar ; Material PP + SAN



## By-pass probe holder

By-pass probe holder for quick installation pH, ORP and Temperature probes.

### MODELS

- |                        |   |
|------------------------|---|
| <b>PSS 8-A Single</b>  | Connection process By-Pass ; No. Probes 3 ; Diameter 12 mm ; Temperature 0 – 40°C ; Pressure 0 – 5 bar ; Material PP + Transparent SAN    |
| <b>PSS 8-A1 Single</b> | Connection process By-Pass ; No. Probes 3 ; Diameter 12 mm ; Temperature 0 – 40°C ; Pressure 0 – 2 bar ; Material PP + Black PP           |
| <b>PSS 8-A Single</b>  | Connection process By-Pass ; No. Probes 1 ; Diameter 33, 35 or 42 mm ; Temperature 0 – 40°C ; Pressure 0 – 5 bar ; Material PP + Black PP |
| <b>PSS 8-A Single</b>  | Connection process By-Pass ; No. Probes 1 ; Diameter 24 mm ; Temperature 0 – 40°C ; Pressure 0 – 5 bar ; Material PP + Transparent SAN    |



## Insertion probe holder

Pressurized probe holder for small residential pools.

**PSS3** Connection process 1/2" G.M. ; Probes connection PG 13,5 or Ø 12 mm ; Temperature 0 – 60°C ; Pressure 0 – 7 bar ; Material PVC

**SPP** Connection process 1" G.F. ; Probes connection PG 13,5 ; Temperature 0 – 60°C ; Pressure 0 – 16 bar ; Material PVC



## Clamp saddles (for paddlewheel flow sensor)

**FOR SFW-1** Size DN 100 – 4" / **FOR SFW-2** Size DN 200 – 8"

**MATERIALS** Body PP (Polypropylene) ; **Gasket** FPM



## CE cables with S7 heads (for probes)

### MODELS

**CE5B** Length 5 mt. ; **Type of cable** Mod. RG58 5 mm ; **Terminal block** Soldered BNC

**CE10B** Length 10 mt. ; **Type of cable** Mod. RG58 5 mm ; **Terminal block** Soldered BNC



## CC15 cables (for paddlewheel flow sensor)

**MODELS** Length 15 mt.

**FEATURES** Resistance 130 Ohm/Km $\pm$ 5% ; **Temperature** -15 – 70°C ; **Capacity Wire/Shield** 150 pF/m ; **Capacity Wire/Wire** 80 pF/m ; **Max Voltage** 49V ; **Nominal section** 8mm<sup>2</sup>



## Certified buffer solutions

Complete buffer solution range for professional calibration.

### MODELS

<b>KIT ST</b>	pH 4.00 and 7.00 ; Quantity 70 cc each pH 4.00 and 7.00 ; ORP 465 mV ; Quantity 70 cc each
<b>ST PH 4</b>	pH 4.00 ; <b>Temperature</b> 20 °C ; Quantity 250 ml
<b>ST PH 7</b>	pH 7.00 ; <b>Temperature</b> 20 °C ; Quantity 250 ml
<b>ST PH 7</b>	pH 9,22 ; <b>Temperature</b> 20 °C ; Quantity 250 ml
<b>ST RX 465</b>	ORP 465 mV ; <b>Temperature</b> 25 °C ; Quantity 250 m



## Housings (for filter cartridges)

**MODELS** Minor 5" **Pressure** up to 8 bar ; **Flow rate** up to 120 L/min ;  
**Temperature** 2 – 40 °C

**MATERIALS** Non-toxic materials ; **Head Loaded** PP ; **IN/OUT threaded inserts** Brass ;  
**Cup** SAN ; **O-Ring** NBR



## Filter cartridges

**MODELS** RLN 20µm Temperature 2 – 40 °C / RLN 80µm Temperature 2 – 40 °C

**MATERIALS** Non-toxic materials ; **Filtering** Nylon (polyamide) ; **External supports** PP ; **Cup** PP ; **Seals** EPDM



## Faucet

**MODELS** Connections IN ½ Gas F – OUT ½ Gas M ; **Material** Grey PVC- UC Body



## TC1 Threaded water meters

Single-jet water meters with pulse sender, dry dial and roller reading. Suitable for cold water up to 30° C.

### MODELS

**25 MM / 1"** 4 pulse/L or 1 pulse/L **Max Flow** (short period) 7 m³/h ; **Nominal Flow** 3,5 m³/h ; **Min Flow** (accuracy ±5%) 70 l/h

**50 MM / 2"** 4 pulse/L or 1 pulse/L **Max Flow** (short period) 30 m³/h ; **Nominal Flow** 15 m³/h ; **Min Flow** (accuracy ±5%) 450l/h



## FC Flanged water meters

Woltmann series water meter with dry dial reading and pulse sender. Suitable for cold water up to 30°C.

### MODELS

**DN 80 / 3"** **Max Flow** (short period) 80 m³/h ; **Nominal Flow** 40 m³/h ; **Min Flow** (accuracy ±5%) 0,7 m³/h

**DN 100 / 4"** **Max Flow** (short period) 120 m³/h ; **Nominal Flow** 60 m³/h ; **Min Flow** (accuracy ±5%) 1,2 m³/h



## SER Tanks in polyethylene

Our tanks are designed to be assembled with dosing systems, with mixers and motor driven pumps or solenoid driven dosing pumps. All are made from food-safe polyethylene, and are resistant to almost all chemicals normally encountered.

### MODELS

50	Capacity 50 Litres ;	Height 45,5 cm ;	Ø 40 cm
100	Capacity 100 Litres ;	Height 64 cm ;	Ø 46 cm
250	Capacity 250 Litres ;	Height 87 cm ;	Ø 60 cm
300	Capacity 300 Litres ;	Height 95 cm ;	Ø 67 cm
500	Capacity 500 Litres ;	Height 119 cm ;	Ø 76 cm
1000	Capacity 1000 Litres ;	Height 122 cm ;	Ø 109 cm



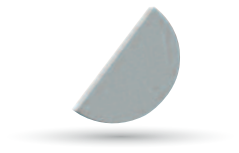


## SML Reinforcement

Tank reinforcement made of PVC (20 mm thick) to be used to install mixers and motor driven pumps or solenoid driven dosing pumps on SER series tanks.

### MODELS

100	Tank model SER 100	250	Tank model SER 250
300	Tank model SER 300	500	Tank model SER 500
1000	Tank model SER 1000		

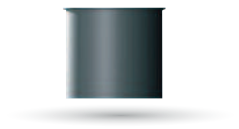


## Uncovered tanks in polyethylene

Designed to contain our SER series tanks. Material food-safe polyethylene.

### MODELS

T150	Tank model SER 100 ;	Height 75,5 cm ;	Ø 51 cm
T300	Tank model SER 250 ;	Height 87,5 cm ;	Ø 67 cm
T400	Tank model SER 300 ;	Height 99,0 cm ;	Ø 72 cm
T800	Tank model SER 500 ;	Height 120 cm ;	Ø 90 cm
T1500	Tank model SER 1000 ;	Height 134 cm ;	Ø 122 cm



## Mixers

Mixers with 0.12 kW single phase electric motors, either slow (200 rpm) or fast (1400 rpm), flange attachment, shaft and propeller in PVC.

### MODELS

#### Slow mixers (200 RPM)

Tank model SER 300 ; Shaft 900 mm ; Propeller 220 mm

Tanks model SER 500 / 1000 ; Shaft 1100 mm ; Propeller 220 mm

#### Fast Mixers (1400 rpm)

Tank model SER 300 ; Shaft 900 mm ; Propeller 220 mm

Tanks model SER 500 / 1000 ; Shaft 1100 mm ; Propeller 220 mm



# Your Choice, Our Commitment

People choose to do business with SEKO for one or more reasons, but ultimately it is their choice, and therefore they merit our commitment. "Our commitment" is total and not only to our customers, but also to each other and the Company's to its employees.

## Vision

**TO BE YOUR PARTNER OF CHOICE FOR  
DOSING SOLUTIONS, GLOBALLY**

SEKO, is a passionate, dedicated Global Family of Professionals. We listen to each of our Partners and are committed to deliver the right solution in the Hygiene, Water Treatment and Industrial Process markets.

## Values

**MUTUAL RESPECT, QUALITY AND  
SPIRIT OF COLLABORATION**

### MUTUAL RESPECT

Mutual Respect because doing business is about being able to generate trust between Customer and Supplier. We'll deliver against our commitments, on time and in a transparent fashion, so you know can plan for your own business needs.

### QUALITY

Quality for SEKO is a 360° reality. It covers not only the design, development, production and delivery of our products and solutions but it runs through the core professionalism of our teams.

### SPIRIT OF COLLABORATION

Spirit of Collaboration is fundamental to our success and SEKO prides itself on how we work as a worldwide team, blending multiple country teams and functions to bring solutions to a Customer request or market need from an idea to the real world in very short time, across our global presence and beyond.





# Your Choice, Our Commitment

In the modern Globalised world, being a privately owned Company has significant benefits especially for our Customers, our Partners. For over 40 years, SEKO has developed a Global organisation able to take the longer view, manage the pressure of the now, and to plan for the long term, delivering true Partnership for our Customers, with transparency and mutual respect for each other.

Whether it's for our reknown flexibility, our attention to detail, the high-quality products, or just the way we do business, we understand that it's Your Choice to do business with us. It is Our Commitment to fulfill your needs wherever you, our Customers are.



For more information about our portfolio, worldwide locations, approvals, certifications, and local representatives, please visit

As part of a process of on-going product development, SEKO reserves the right to amend and change specifications without prior notice. Published data may be subject to change.

© SEKO, Layout and origin: Italy, 850001-SWP\_en\_int, 09.2017

# seko

**ERTEK**  
www.ertek.com

**Ertek Yapı ve Makina Endüstri Ekipmanları San. ve Tic. Ltd. Şti.**

Halkapınar Mah. Pamuk Plaza İş Merkezi 1082 Sokak No: 3 M 35170 Yenışehir Konak / İZMİR  
Tel: (0232) 469 43 53 Faks: (0232) 457 46 51 • www.ertek.com • info@ertek.com