

Turbidron

Bobbin Wound Sand Filters for Commercial Pools



"Pool Technology"



ERTEK
www.ertek.com

Ertek Yapı ve Makina Endüstri Ekipmanları
San. ve Tic. Ltd. Şti.

Halkapınar Mah. Pamuk Plaza İş Merkezi 1082
Sokak No: 3 M 35170 Yenişehir Konak / İZMİR
Tel: (0232) 469 43 53 Faks: (0232) 457 46 51

www.ertek.com • info@ertek.com

"Turbidron" Bobbin Wound Sand Filters for Commercial Pools

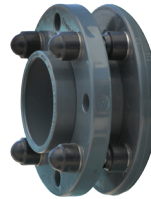
GEMAS "TURBIDRON" SAND FILTERS. Filter shell made of FR Polyester and reinforced by fiberglass bobbin winding outside. Complete with pressure gauge, air release 1/2". Test pressure 4kg/cm². Max. operation pressure 2,5 kg/cm². Filtration rate: 40 m³/h/m². Filtration bed depth:1,0m {Excluding 021717E}. Please ask price for 4,0 and 6,0 kg/cm² operation pressures.



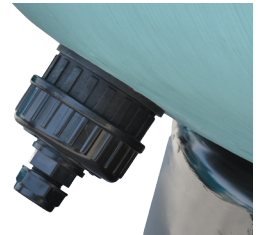
Fiberglass Reinforced Filter Lid



40 cm Large Lid Opening

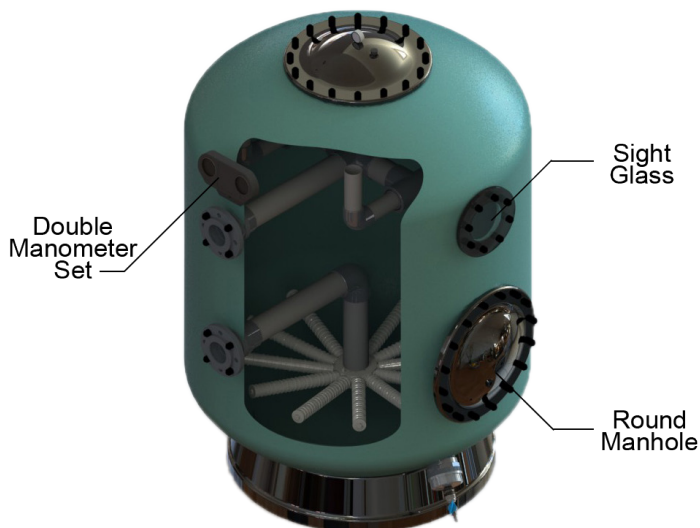


Double Flange Connections with Screws



Filter Drainage

MODEL	1200E	1200	1400	1600	1800	2000	2200	2400	2500
Code	021717E	021717	021718	021719	021720	021721	021722	021723	021724
D (mm)	1200	1200	1400	1600	1800	2000	2200	2400	2500
H ₁ (mm)	1160	1566	1800	1905	1950	2050	2300	2370	2770
H ₃ (mm)	1100	1506	1794	1845	1890	1990	2240	2310	2710
H ₄ (mm)	490	617	650	710	750	810	900	900	950
H ₅ (mm)	820	947	980	1210	1260	1300	1400	1400	1450
CONNECTIONS Ø (mm)	90	90	110	125	140	160	200	200	200
FLOW (m ³ /h) (50 m ³ /h/m ²)	56	56	77	100	127	157	190	226	245
SAND (Kg)	1300	1500	1950	2750	3650	4750	5700	6600	10000
NET WEIGHT (Kg)	80,000	159,000	180,000	240,000	290,000	330,000	480,000	575,000	650,000



Additional Options	Code
Round Manhole (2,5 bar) Ø 400 mm	0217172
Round Manhole (4 bar) Ø 400 mm	0217182
Sight Glass Ø 90 mm	0217192
Sight Glass Ø 125 mm	0217202
Sight Glass Ø 200 mm	0217212
Automatic Air Purge 1"	0217222
Automatic Air Purge 2"	0217232
Double Manometer Set	0217242
Double Manometer Set with Sampling Valves	0217252
Ozone Protection (Vinlyester coating)	
Sand Bed Depth = 1,5 m difference (from 1,2 m)	
Nozzle Plate	