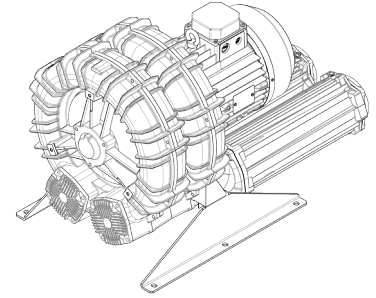


<b>Technical Characteristics</b>
- Aluminum alloy construction - Smooth operation - Maintenance free
<b>Electric Motor</b>
- Motors with IP 55 protection rating. - class F insulation, suitable for operating with inverter (refer to FPZ) - Thermal Protector (PTO) as standard
<b>Options</b>
- Special voltages (IEC 60038) - Surface treatments - Increased seal version

~3	[V] (Y / Δ)	[Hz]
IE2	690 / 400	50
	460 / 795	60
Wide Range	600 - 720 / 345 - 415	50
	660 - 830 / 380 - 480	60

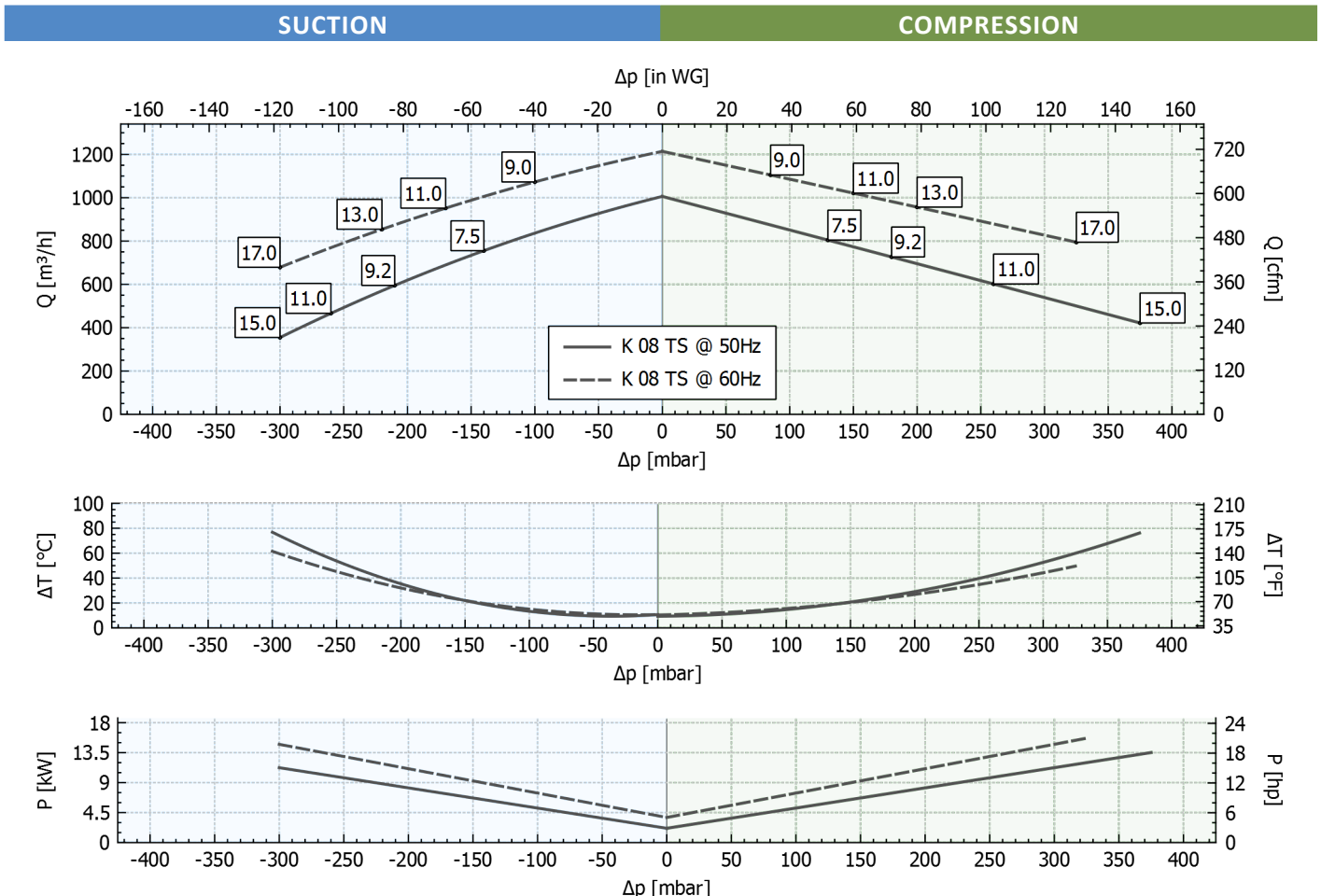
Supply voltage - IE2 only at 50 Hz - Tolerance on the fixed voltage value ± 10%, in range ± 5%.



### Performance Table

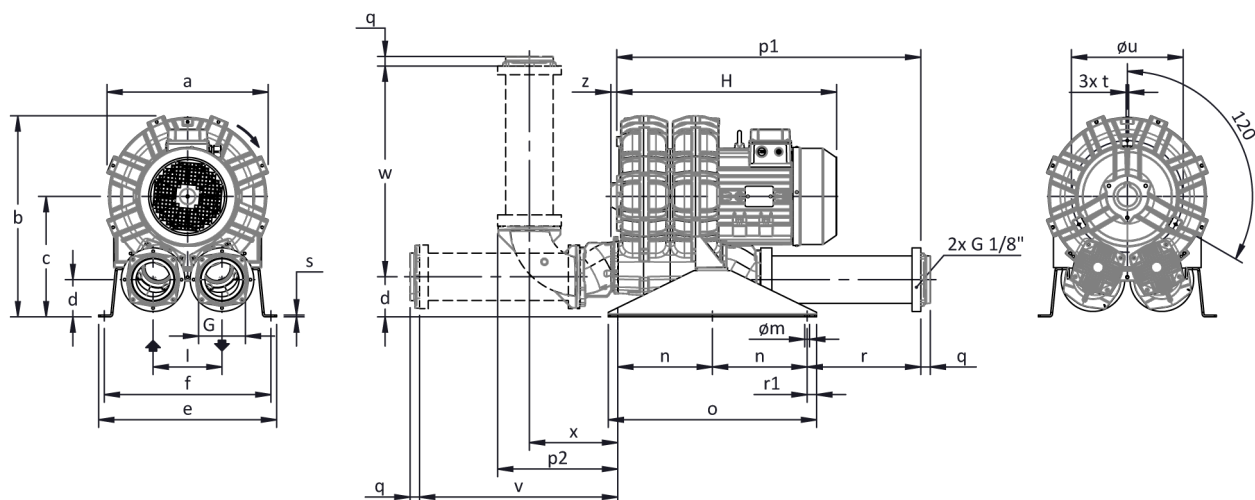
P <sub>n</sub> [kW]	Frequency [Hz]	Δp <sub>max</sub> [mbar]		Q <sub>max</sub> [m³/h]	Leq <sup>1</sup> [dB(A)]	Weight [kg]	H <sup>3</sup> [mm]	Current Consumption (Y/Δ) [A]		Cosφ [-]	Speed [rpm]
		Suction	Compression					IE2 <sup>2</sup>	Range		
9	60	100	85	1214	80.9	104	580	8.86 / 15.34	9.87-9.00 / 17.1-15.6	0.83	3530
9.2	50	210	180	1006	78.9	109	620	10.3 / 17.8	11.1-10.6 / 19.2-18.3	0.83	2940
11	60	170	150	1214	80.9	115.5	620	10.3 / 17.9	11.9-10.3 / 20.6-17.9	0.86	3530
11	50	260	260	1006	78.9	115.5	620	12.53 / 21.7	13.0-12.9 / 22.6-22.3	0.81	2940
13	60	220	200	1214	80.9	115.5	620	12.2 / 21.2	13.8-12.4 / 23.9-21.4	0.84	3530
15	50	300	375	1006	78.9	133	695	16.46 / 28.51	17.8-16.6 / 30.8-28.8	0.84	2940
17	60	300	325	1214	80.9	133	695	15.7 / 27.2	18.1-15.6 / 31.3-27.1	0.86	3540

1. Noise level measured at a distance of 1 m with ducted intake and delivery, in accordance with Standard ISO 3744.  
 2. IE2 only at 50 Hz.  
 3. See figure "dimensions" at following page.



Tolerance on indicated values ± 10%.  
 Data subject to change without notice.  
 Curves referring to air at a temperature of 20 °C and atmospheric pressure of 1013 mbar (abs).

## Dimensions



Configuration with a vertical silencer is only available with the CK accessory kit; for all assembly options refer to FPZ.

Dimensions in mm

NOT Binding

a	b	c	d	d1	e	f	G	l	l1	l2	m	n	o	p1	p2	q	r	r1	s	t	u	v	w	x	y	z
457	548	319	98	-	480	448	G 4"	182	-	-	13	250	550	802	315	25	299	25	5	M8	310	522	581	276	-	16

## INSTALLATION

- For proper operation of the machine, it must be provided with a suction FILTER and a vacuum/pressure limiting VALVE.
- Other accessories are available on request.
- Permissible ambient and fluid temperature in suction from -15 °C to +40 °C.
- Read the instruction manual carefully before installing the machine.