

Technical Characteristics

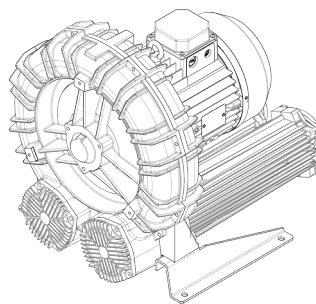
- Aluminum alloy construction
- Smooth operation

Electric Motor

- Motors with IP 55 protection rating.
- Class F(B) insulation
- Thermal Protector (PTO) as standard

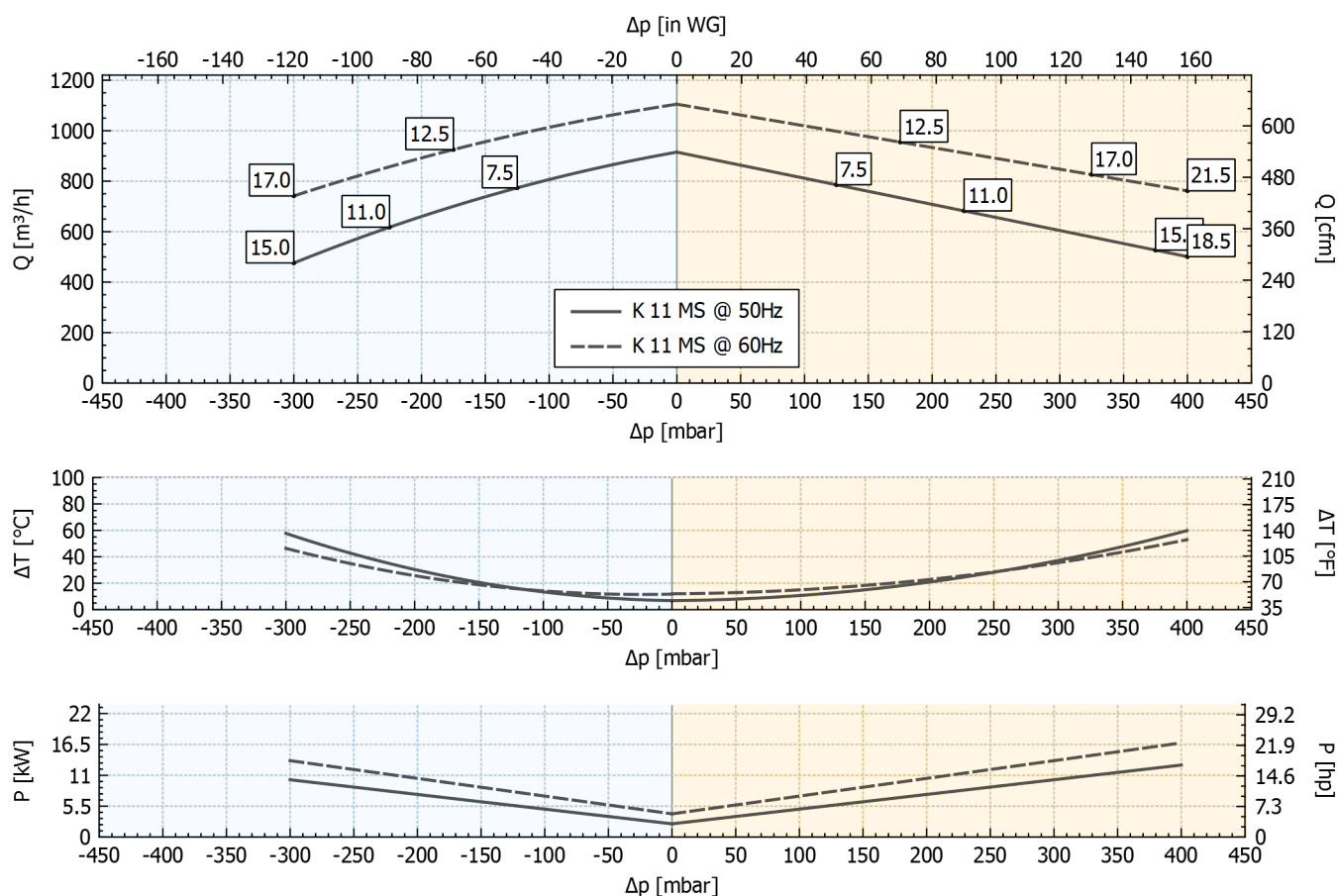
Options

- Special voltages (IEC 60038)
- Surface treatments
- Increased seal version


Performance Table

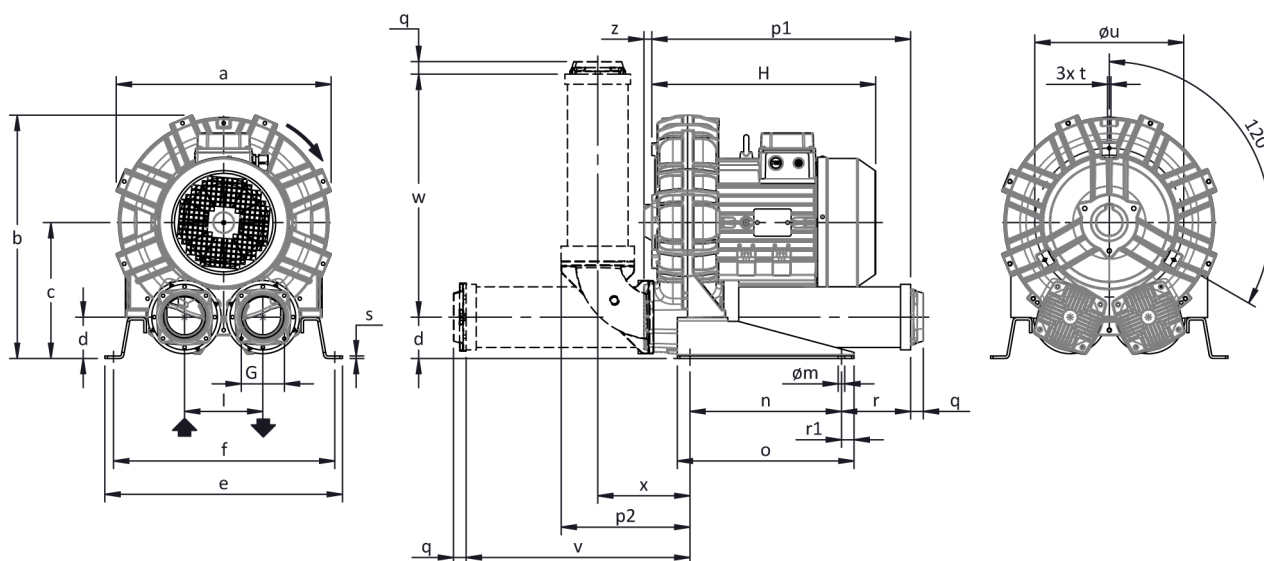
P _n [kW]	Frequency [Hz]	Δp _{max} [mbar]		Q _{max} [m ³ /h]	Leq ¹ [dB(A)]	Weight [kg]	H ² [mm]
		Suction	Compression				
7.5	50	125	125	915	80	93	552
11	50	225	225	915	80	123	677
12.5	60	175	175	1105	82	123	677
15	50	300	375	915	80	137	677
17	60	300	325	1105	82	137	677
18.5	50	-	400	915	80	155	699
21.5	60	-	400	1105	82	155	699

1. Noise level measured at a distance of 1 m with ducted intake and delivery, in accordance with Standard ISO 3744.
2. See figure "dimensions" at following page.

SUCTION
COMPRESSION


Tolerance on indicated values ± 10%.
 Data subject to change without notice.
 Curves referring to air at a temperature of 20 °C and atmospheric pressure of 1013 mbar (abs).

Dimensions



Dimensions in mm
 NOT Binding

a	b	c	d	d1	e	f	G	l	l1	l2	m	n	o	p1	p2	q	r	r1	s	t	u	v	w	x	y	z
542	603	332	91	-	540	508	G 4"	200	-	-	13	300	350	596	305	25	204	25	5	M8	390	510	556	220	-	16

INSTALLATION

- For proper operation of the machine, it must be provided with a suction FILTER and a vacuum/pressure limiting VALVE.
- Permissible ambient and fluid temperature in suction from -15 °C to +40 °C.
- Read the instruction manual carefully before installing the machine.