

Technical Characteristics

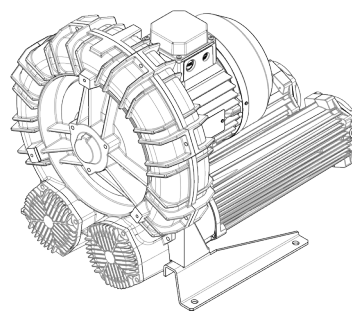
- Aluminum alloy construction
- Smooth operation

Electric Motor

- Motors with IP 55 protection rating.
- Class F(B) insulation
- Thermal Protector (PTO) as standard

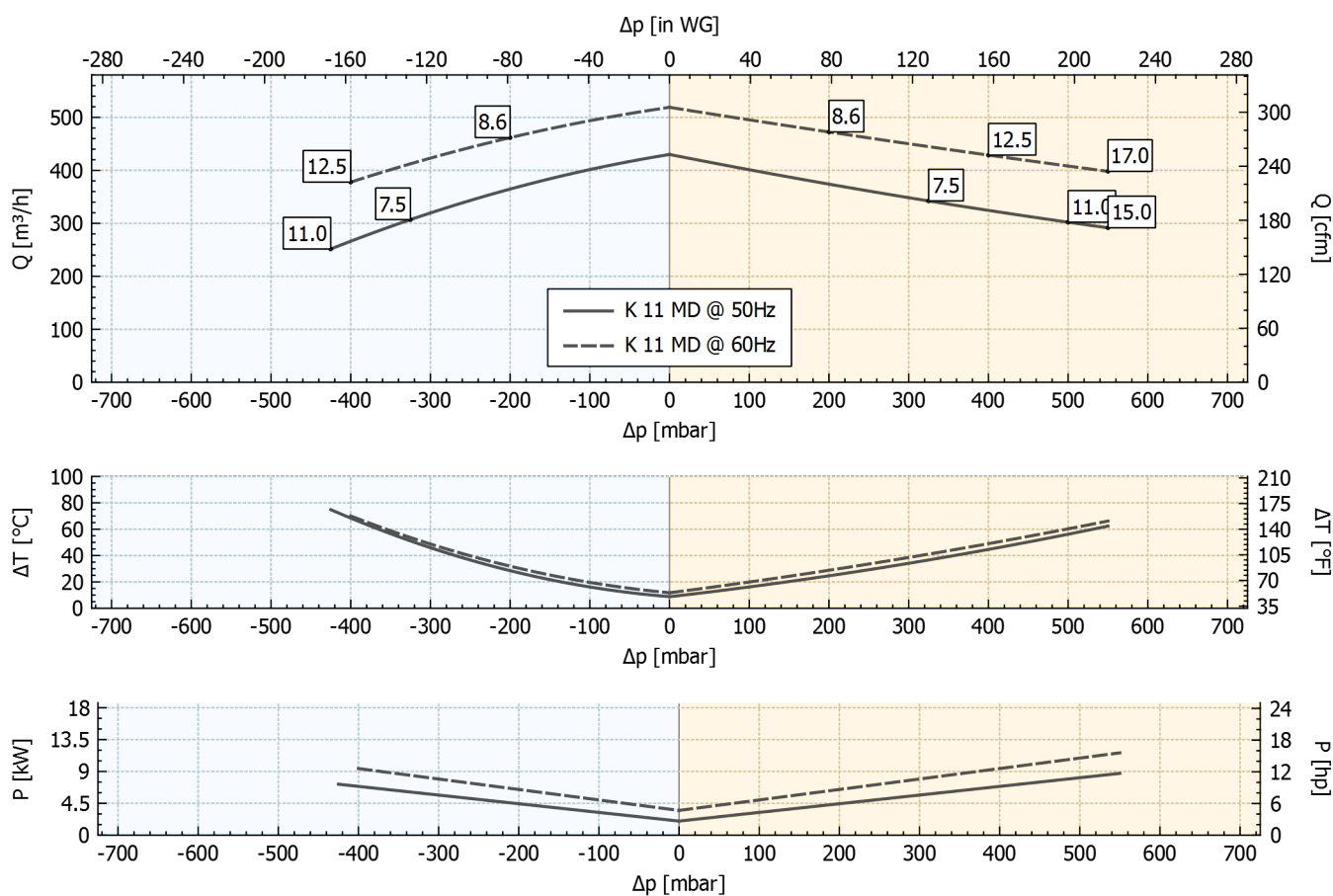
Options

- Special voltages (IEC 60038)
- Surface treatments
- Increased seal version


Performance Table

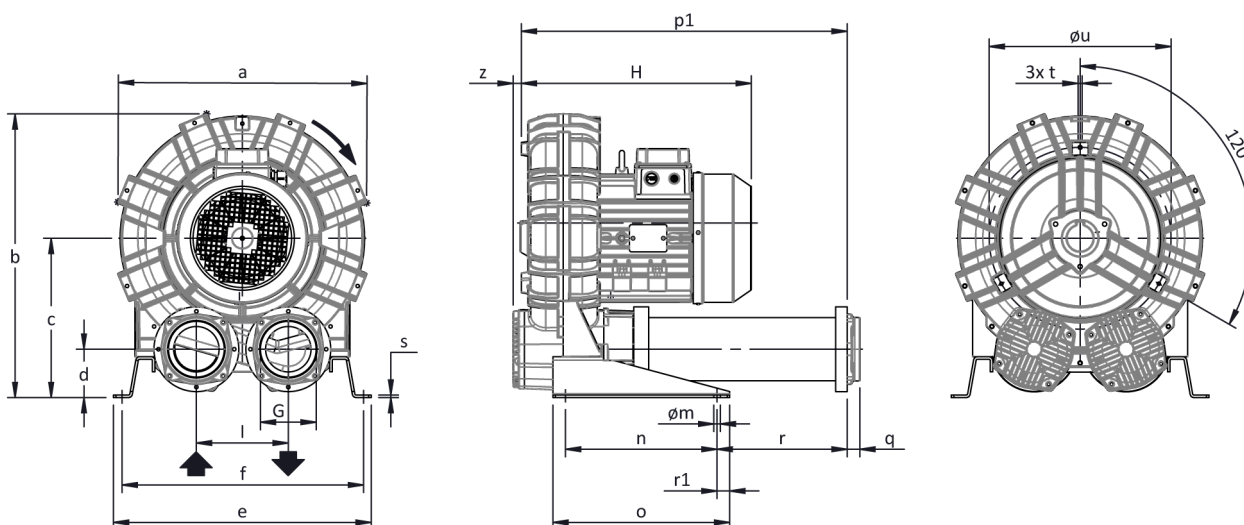
P _n [kW]	Frequency [Hz]	Δp _{max} [mbar]		Q _{max} [m ³ /h]	Leq ¹ [dB(A)]	Weight [kg]	H ² [mm]
		Suction	Compression				
7.5	50	325	325	430	78.4	105.5	552
8.6	60	200	200	519	80.4	105.5	552
11	50	425	500	430	78.4	135.5	677
12.5	60	400	400	519	80.4	135.5	677
15	50	-	550	430	78.4	149.5	677
17	60	-	550	519	80.4	149.5	677

1. Noise level measured at a distance of 1 m with ducted intake and delivery, in accordance with Standard ISO 3744.
2. See figure "dimensions" at following page.

SUCTION
COMPRESSION


Tolerance on indicated values $\pm 10\%$.
Data subject to change without notice.
Curves referring to air at a temperature of 20 °C and atmospheric pressure of 1013 mbar (abs).

Dimensions



Dimensions in mm
 NOT Binding

a	b	c	d	d1	e	f	G	l	l1	l2	m	n	o	p1	p2	q	r	r1	s	t	u	v	w	x	y	z
542	603	332	91	-	540	508	G 4"	200	-	-	13	300	350	654	-	25	262	25	5	M8	390	-	-	-	-	16

INSTALLATION

- For proper operation of the machine, it must be provided with a suction FILTER and a vacuum/pressure limiting VALVE.
- Permissible ambient and fluid temperature in suction from -15 °C to +40 °C.
- Read the instruction manual carefully before installing the machine.