



## 3D SERIES

### GENERAL FEATURES

3D SERIES is the new EBARA range of close coupled pumps (3D) and standardized pumps manufactured according to EN733 (3DS-3DP) with cast iron body and AISI 304 or AISI 316 stainless steel impeller.

3D, 3DS and 3DP pumps represent a versatile range suitable for a lot of applications and offer significant advantages in terms of reliability, efficiency and cost saving.

The pumps are "Back pull-out" design: the motor, the coupling, the support and the impeller can be removed without disconnecting the pump body from the pipes.

- Available with 50Hz (2 and 4 poles) and 60Hz (2 poles)
- Perfectly interchangeable with the stamped steel 3 SERIES version
- High energy efficiency up to 85% thanks to the impeller and new volute: MEI > 0.4
  - Cast iron pump body EN-GJL-250-EN 1561
  - Mechanical seal conforming to EN12756 (ex DIN 24960)
- AISI 304 stainless steel impeller, stamped and welded with laser technology, for sizes 32, 40 and 50; AISI 316 microcasted steel for all size 65 versions

### APPLICATIONS

Handling of water and clean, chemically non-aggressive liquids.  
Water supply - Boosting system

Washing plants - Industry

Water circulation in climate control systems

Irrigation - Agriculture

# TWO PUMPS IN ONE

3D



3M

3DS



3S

3DP

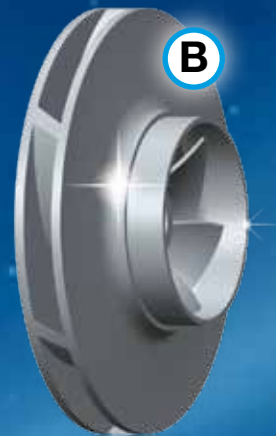
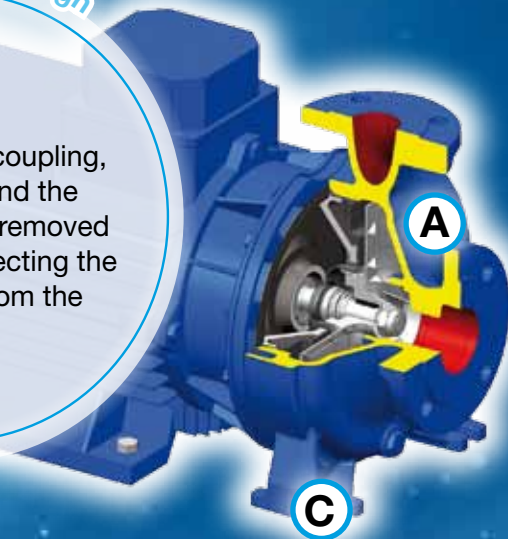


3P

# 3D SERIES

Back-pull-out design

The motor, the coupling, the support and the impeller can be removed without disconnecting the pump body from the pipes.



### Pump Body:

- High resistant to pipe stresses, thanks to its cast iron structure with integrated support feet
- High accurate design to reduce pressure losses
- Perfectly interchangeable with the 3 SERIES stamped steel body

### Impeller:

- Made of stainless steel, with high hydraulic efficiency and excellent NPSH value
- Hydraulically balanced to prevent axial thrust towards the seal
- Efficiency level exceeding 85% for size 65 pumps

### Support structure:

- Reinforced to withstand forces and stresses of the plant

### Motors:

- IE2
- IE3 from 7,5kW up to 22kW

EBARA introduces the 3D SERIES cast iron range which is perfectly interchangeable with the 3 SERIES steel range. The stainless steel hydraulic section and the motor are manufactured according to EBARA's rigorous standards and are the same on both product versions.

This allows significant advantages to both the end user and the installer, as you can transform the product based on the application simply purchasing the pump body and keeping intact the extraordinary performances of the stainless steel hydraulics.

Moreover, the complete 3D SERIES and 3 SERIES ranges can be customized with different mechanical seals and motors.



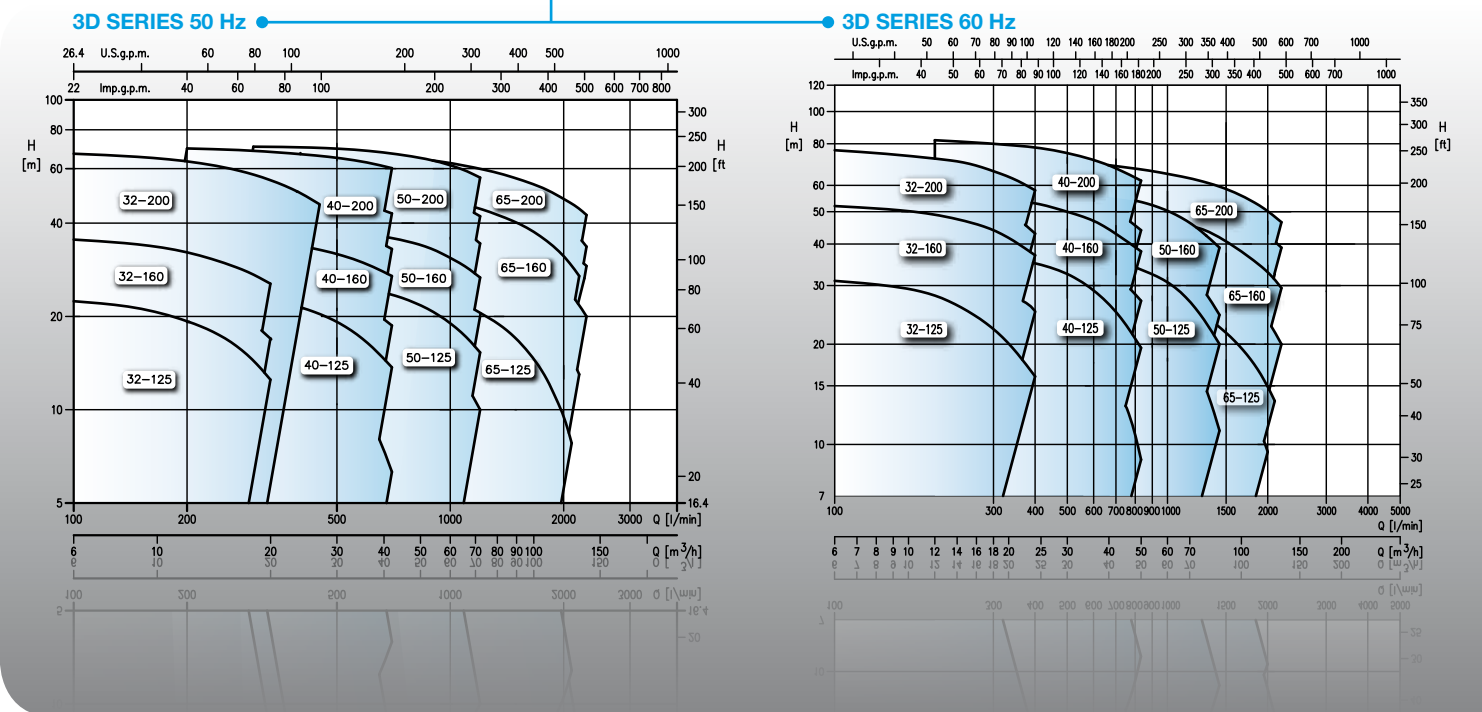
## PUMP

- 50Hz version:  
Flow rate up to 138 m<sup>3</sup>/h  
Head up to 71 m
- 60Hz version:  
Flow rate up to 132 m<sup>3</sup>/h  
Head up to 83 m
- Temperature of the pumped liquid:  
from -5°C to +90°C for the standard version  
from -5°C to +110°C for the H-HS-HW-HSW versions  
from -5°C to +120°C for the E version
- Maximum operating pressure: 10 bar (PN 10)
- Cast iron pump body EN-GJL-250-EN 1561
- Mechanical seal conforming to EN12756 (ex DIN 24960)
- 3DP SERIES available in the bare shaft version (3DPF)

## MOTOR

- Standard IE2 motors according to Regulation (CE) no. 640/2009 and IEC 60034-30; IE3 on request
  - Protection rating: IP55
  - Insulation class: F
- Performances according to EN 60034-1
  - Continuous operation

### PERFORMANCE RANGE:



## 3D SERIES

## 3D SERIES CENTRIFUGAL PUMPS CLOSE COUPLED AND STANDARDIZED EN733

50/60 Hz

# 3D SERIES

