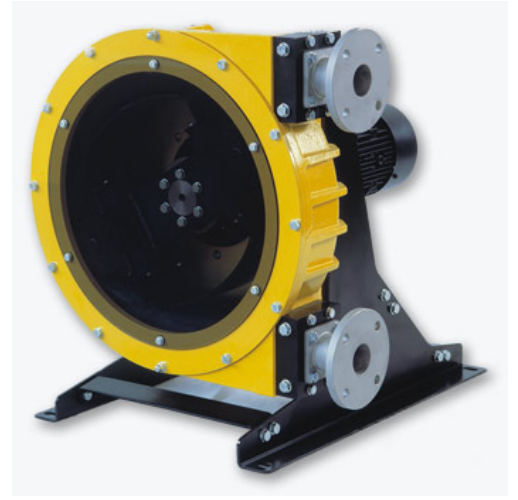
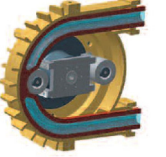
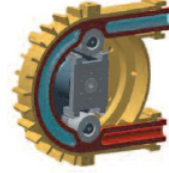
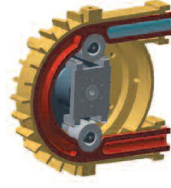


Teknoloji	: Roller tip (yağsız)
Model	: FMP-60
Kapasite (max)	: 10,8 m ³ /saat
Motor (Kw)	: 3 Kw
Pompa çalışma hızı	: 57 rpm
Basınç	: 8 bar (max)
Gövde malzemesi	: Dökme demir
Hortum iç çapı	: 55 mm
Katı partikül geçirgenliği	: 13,8 mm
Pompa Bağlantı çapı	: DN 50
Ağırlık (motorsuz)	: 235 kg

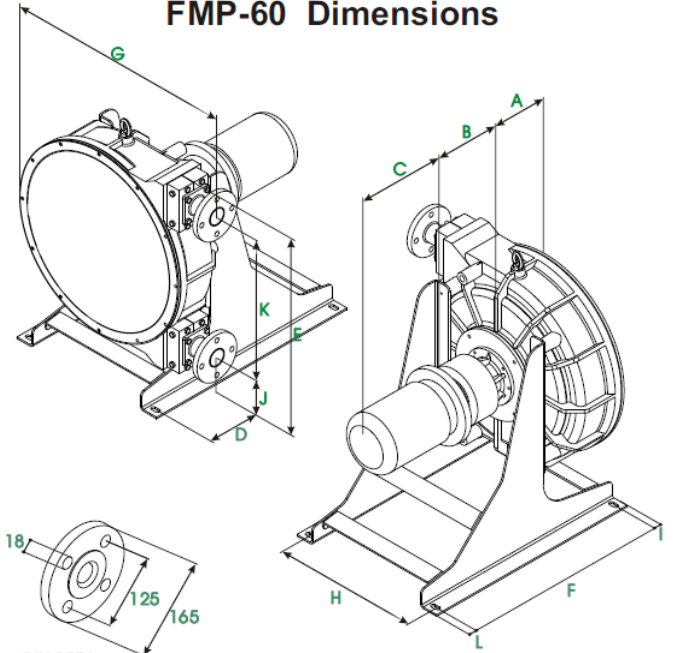
* Pompa hortum malzemesi prosese göre aşağıdaki farklı malzemelerden seçilebilir.

NR
NBR
EDDM
NR-A
NBR-A
HYPALON

Boyer
peristaltic pumps
FMP SERIES

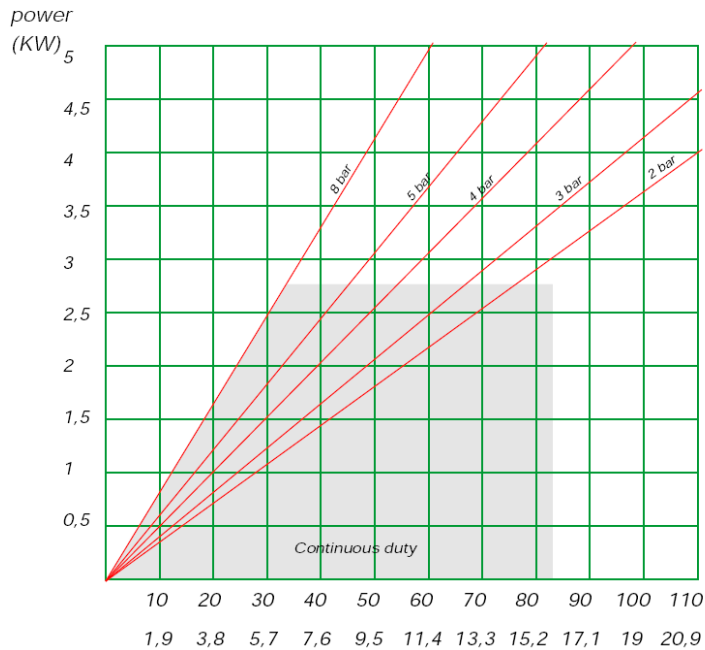


FMP-60 Dimensions



DIN 2576
DN-50 / PN-10

A	B	C	D	E	F	G	H	I	J	K	L
215	*	*	111	805	740	735	500	25	210	510	25



Product
Temp.
(°C)

40
50
60
70
80